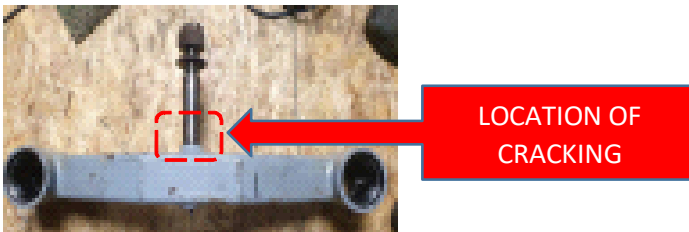


502.

IE Park JR Coaster front axle cracking

NAFLIC has been informed that two areas of cracking have been identified on a front axle of an IE Park JR Coaster during an annual inspection, via Magnetic Particle Inspection (MPI).

It is recommended that suitable NDT inspection should be performed periodically to identify possible cracking on all safety critical train components, taking note of any stipulations made by the device manufacturer, design reviewer and inspection body.



The information contained within is provided in good faith and every effort has been made to ensure its accuracy. NAFLIC shall not be held responsible for any loss of business or profits, nor any direct or indirect or consequential loss or damage resulting from the publication/distribution and/or use of the information provided or any inaccuracy herein.