



# ADIPS

AMUSEMENT DEVICE INSPECTION PROTECTION SCHEME

Become a ride inspector



# Introduction

Welcome, it's great that you're interested in ADIPS registration. Safety is the industry's number one priority and every time a ride is inspected and certified for use by the public it really is making a difference.

ADIPS has developed over many years to improve the safety of members of public visiting fairgrounds and theme parks in the UK. Managed by the industry in close consultation with the HSE, ADIPS comprehensive safety framework of inspections is recognised as best practice bringing confidence to everyone.

ADIPS is a badge of merit, associating your organisation with the industry's highest standard, demonstrating independence, competence and quality in your services. It demonstrates to your customers you are taking all the necessary steps to ensure their rides are in a safe and serviceable condition, giving them confidence they are carrying out safe and proper maintenance of their rides and complying with their legal duties under HSW Act and PUWER.

ADIPS is improving and developing every day. Within the industry an ADIPS certificate gives a seal of approval as commonplace as an MOT. Our aim is for our brand to be more recognisable - a hallmark of safety - that will benefit the UKs fairground and theme park sector for many years to come.

You can have a rewarding part to play in that, and we look forward to hearing from you soon.

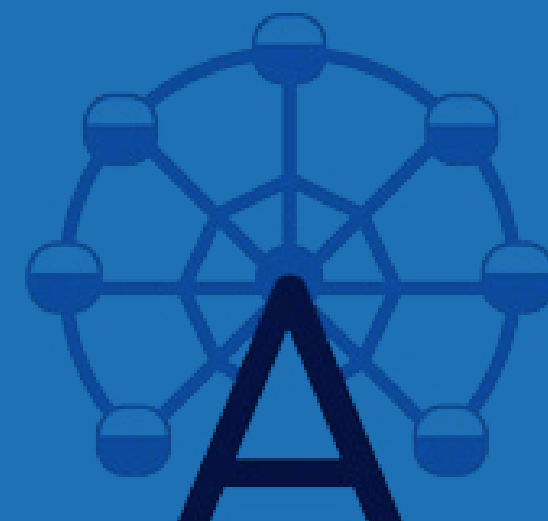


“

Our aim is for our brand to be more recognisable – a hallmark of safety – that will benefit the UKs fairground and theme park sector for many years to come.

You can have a rewarding part to play in that, and we look forward to hearing from you soon.

”



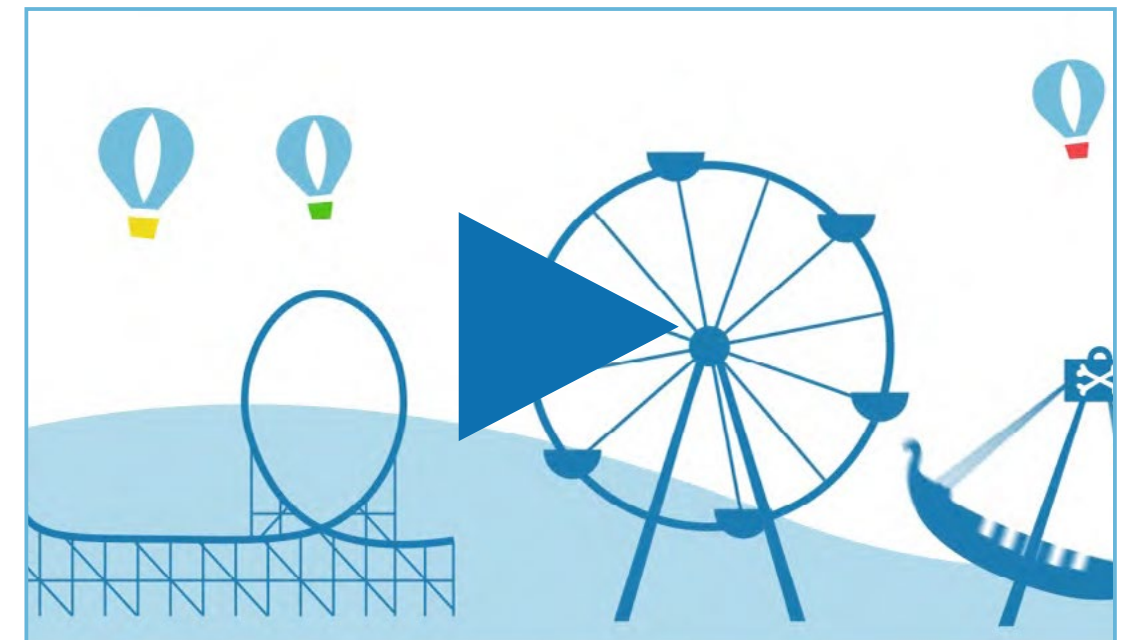


# About ADIPS

Fairground and amusement parks are relatively safe when compared with other leisure activities and, in fact, represent some of the safest leisure activities of all.

ADIPS role is crucial. The industry recognises the importance of inspection so much it devised and manages the system. This is a unique position within safety and one the industry is very proud to promote. We do all of this in close consultation with the HSE. The HSE actively support our work and recognise ADIPS positive contribution to safety.

They are on record as saying 'we believe ADIPS has contributed to the reduction in accidents on fairgrounds over recent years'



“

We believe ADIPS has contributed to the reduction in accidents on fairgrounds over recent years

”

- Health and Safety Executive (HSE)

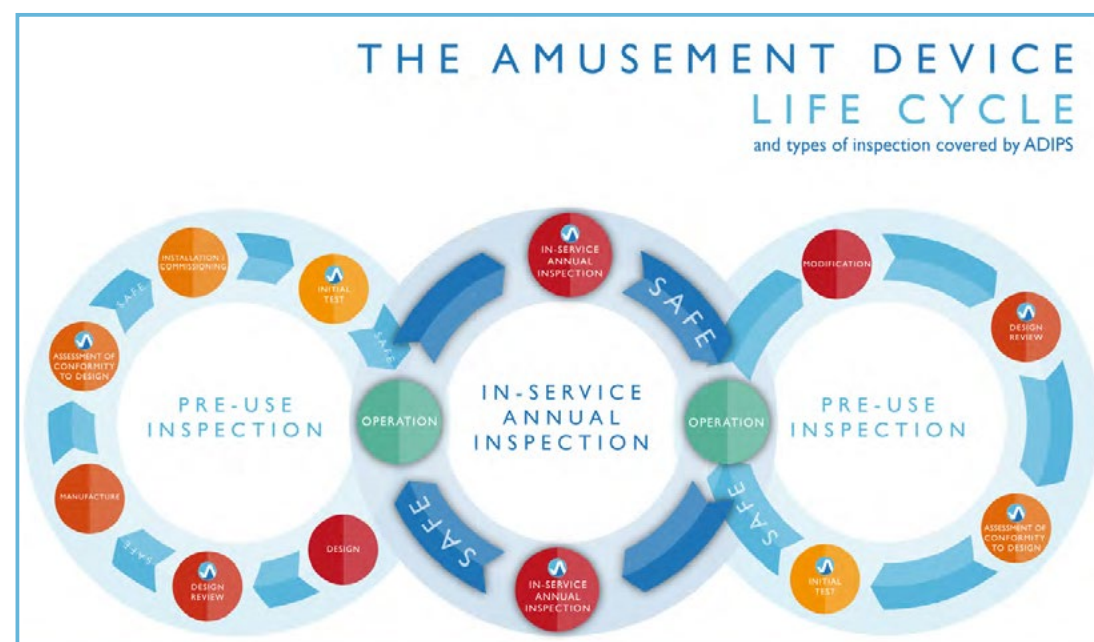


# ADIPS Inspections

ADIPS is similar to the MOT for cars – an annual check during operation on the safety critical parts together with an issue of a test certificate to confirm safe condition. Rides are split into categories depending on their complexity and the technical knowledge required to inspect them.

ADIPS also includes a series of pre-use inspections covering of the design, manufacture and installation before a opens to the public for the first time.

What you carry out will depend on your qualifications or experience. New inspectors often start inspecting simple rides and move into inspecting more complex rides as they gain experience.



[Find out more](#)

“

ADIPS is similar to the MOT for cars – an annual check during operation on the safety critical parts together with an issue of a test certificate to confirm safe condition.

”





## Who are we looking for?

The majority of ADIPS work is annual inspection with about 7,500 rides going through this examination each year. Individuals and organisations with relevant technical qualifications, normally a minimum of engineering technician (EngTech), and with engineering experience is a great starting point for this work.

Experience with amusement devices is also advantageous but not essential as there are several entry points depending on your qualifications or experience.

Alongside your technical qualifications and experience you need to be independent of the rides you inspect, so you can make a judgement on the ride's continuing operation without conflict of interest.





# Why be an ADIPS inspector?

Inspection is a safety critical role and you will be making a real difference to public safety. There is a demand for inspection services and ADIPS registration provides a proven and workable framework for providing them.

You will be able to demonstrate your work is independent and competent and can provide services that will help ride owners to operate their rides safely and comply with the law. ADIPS has international recognition and many of our inspection bodies also offer their services to clients overseas.

## How ADIPS can help you?

Providing an inspection service is a lot more than knowing your way around the ride. You will also need to have business systems and processes in place. You will also need to keep your knowledge of rides, technologies and standards up to speed. Here are just a few of the areas in which we can assist.





# Why ADIPS?

## Business profile

We receive a high number of queries from potential customers looking for inspectors to carry out work- make sure you are one of them. Inclusion on the ADIPS Register makes you accessible to 000's of ride operators who require inspection services.

We are the only ride inspection body supported by the entire industry and HSE, and the vast majority of ride operators in the UK choose ADIPS.

## Quality Management Systems

Developing organisation procedures takes time and can be a challenge for new organisations entering the market. In recognition of this we have developed a generic Quality Management System incorporating a Quality Manual and Operating Procedures to comply with the international standard for inspection, ISO/IEC 17020. This Quality Management System is offered to new organisations free of charge as well as assistance to help you compile it.

## Inspection and certification

Compiling inspection reports and certification is something you must do at the end of every inspection. We have digitised this process, so the reports and certificates issued by each IB are standardised and comply with best practice requirements. Inspections can be completed, and reports produced on site using an app, saving you time and effort developing and writing inspection reports. This full traceability of inspection results will also allow you to see service history of the rides helping you to focus your inspection.





# Continuing Professional Development

We care about your continuing professional development. We provide regular seminars and training both face-to-face and using web-based platforms.

You will also be given access to a suite of Technical Bulletins, safety alerts and industry updates to ensure you stay up to speed with anything affecting ride inspectors.

## The path to registration

To apply to become an ADIPS inspector you should contact ADIPS to register your interest. You will need to complete application forms and supply supporting information about your competence. You will be assessed by an industry Panel and if successful granted a probationary registration status. This means you will be registered to carry out work but you must adhere to the requirements of your probationary period.







Click here to register your interest

☎ 0191 516 6381

www.adips.co.uk

✉ office@adips.co.uk

