



RIBLET

TRAMWAY COMPANY, INC.

P.O. Box 3523 Spokane, WA 99220-3523 USA

Phone (509) 483-8555

Fax (509) 483-1996

April 8, 2002

Service Bulletin #2002-138

Applicability: All Riblet chairlifts using low pressure (approx. 200 psi max.) hydraulic release for Service Brake and Drive Sheave Rollback Device or Traction Rope Backstop.

Subject: Optional pressure relief valve, ref. drawing A08519.

Compliance: Preventive maintenance.

Distribution: On request.

Most of the subject chairlift brake systems use direct-acting 3-way poppet-type solenoid valves (usually a "Skinner" valve) to control the Service Brake and Drive Sheave Rollback Device ("bullwheel backstop") and/or Riblet Traction Rope Backstop. Under certain conditions, usually a lift which stops rarely, which has a motor room that may heat up substantially during the operating day, and perhaps has had medium or high pressure (e.g. SAE 100R5 or SAE 100R2) hoses installed for these brakes, pressure in the brake release lines may rise to the extent that the solenoid valve could leak or be damaged. Pressure should never exceed 300 psi.

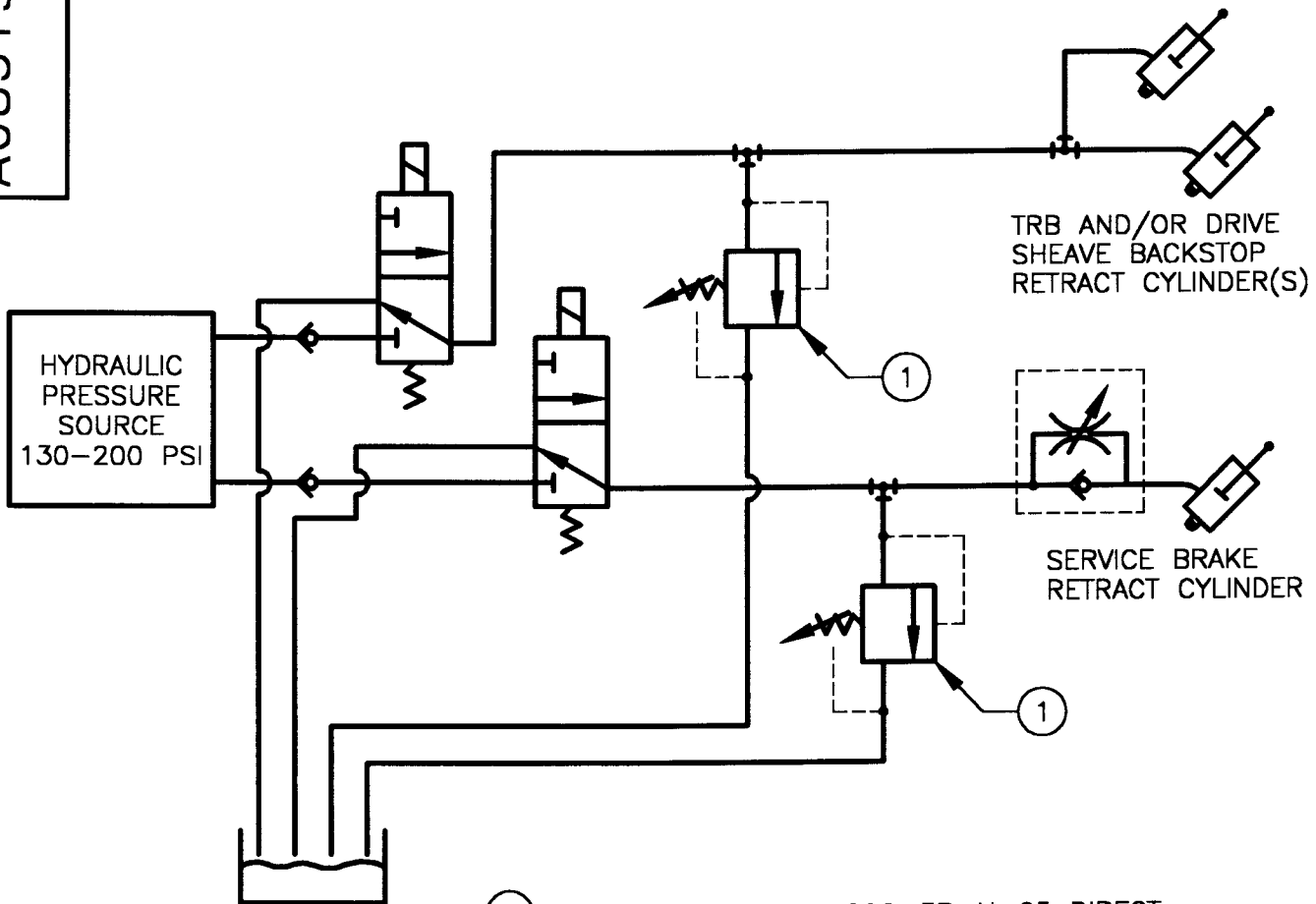
If excessive brake release pressure is observed, direct-acting relief valves may be installed in either or both brake release lines as shown schematically on attached drawing No. A08519. Parts are available from Riblet. Aside from limiting pressure buildup, this modification has no effect on brake operation or performance.

Retain a copy of this Service Bulletin with the records of any lift so modified.

Thank you,

Ribley Tramway Co.

A08519



① HYDRA FORCE RV08-20C-3P-N-05 DIRECT ACTING POPPET RELIEF VALVE OR EQUIVALENT. SET CRACKING PRESSURE AT 300 PSI MAX. RE-SEAT PRESSURE APPROX. 240 PSI

INSTALLATION OF PRESSURE LIMITING RELIEF VALVE ON LOW PRESSURE BRAKE CIRCUIT(S). PROTECTS SOLENOID VALVES FROM OVER PRESSURE, DOES NOT AFFECT BRAKE OPERATION.

REF. SERVICE BULLETIN #2002-138.

1 MADE GENERIC		04.08.02	DS	
NO.	REVISION	DATE	BY	CHK.
RIBLET TRAMWAY COMPANY ENGINEERS • MANUFACTURERS • ERECTORS OF AERIAL TRAMWAYS SINCE 1897		TITLE BRAKE PRESSURE RELIEF MOD.		
		TOLERANCE (EXCEPT AS NOTED) FRACTIONAL ±1/16" DECIMAL ±.005" ANGULAR ±1°		
THIS DRAWING OR PRINT IS CONFIDENTIAL AND THE INFORMATION THEREON MUST NOT BE COPIED NOR UTILIZED IN ANY WAY IN WHOLE NOR IN PART WITHOUT PERMISSION FROM THE RIBLET TRAMWAY CO. THIS DRAWING OR PRINT IS PROPERTY OF RIBLET TRAMWAY CO. AND MUST BE RETURNED TO R.T.CO. ON REQUEST.		DESIGN	SCALE NONE	DRAWING NUMBER
		DRAWN JKM CHECK DS	DATE 02.20.02	A08519