



NUMBER: B387R1097-0

DATE: MAY 17, 1991

SUPERSEDES:

---

---

## SERVICE BULLETIN

---

---

Effective Serial Number: 387-02486 thru 387-03489 Excluding Park Models  
Chance Rides, Inc.

79-46001 thru 84-4623 Excluding Park Models  
Chance Manufacturing Co., Inc.

Chance Rides, Inc. SPECIFICALLY DISCLAIMS ANY  
LIABILITY for losses associated with rides  
produced by Chance Manufacturing Company, Inc.

Ride: SEA DRAGON Subject: Spread Cylinder Support Weldment

Chance Rides, Inc. has become aware that if the spread cylinders on the tower legs of the SEA DRAGON are fully extended or retracted with pressure still being applied to the cylinder, that damage to the cylinder attaching weldment and injury to personnel may occur. Chance Rides, Inc. has developed a kit which when properly installed increases the welded area of the cylinder attaching weldment to the tower leg.

Chance Rides, Inc. requires all owners of the above noted SEA DRAGON amusement rides to order and install kit number K387R1097-0, using the instructions supplied with the kit. The Certification Of Compliance must be returned to Chance Rides, Inc. within 15 days from receipt of the kit. This kit includes all necessary parts to rework one ride.

In addition to this kit, proper set-up and tear-down procedures must be followed. Extend and retract the cylinders slowly, making sure that the cylinders and the clevises do not bind. Never extend or retract spread cylinders with tower legs resting on the stub towers. If the cylinders are fully extended or retracted the pressure to the cylinders must be stopped immediately. Never utilize more than 2500 psi when operating spread cylinder. Stay clear of tower legs when extending or retracting the spread cylinders. All owners of SEA DRAGON amusement rides are to order and install four (4) decals number 22193005 as shown on this bulletin, one per stub tower.

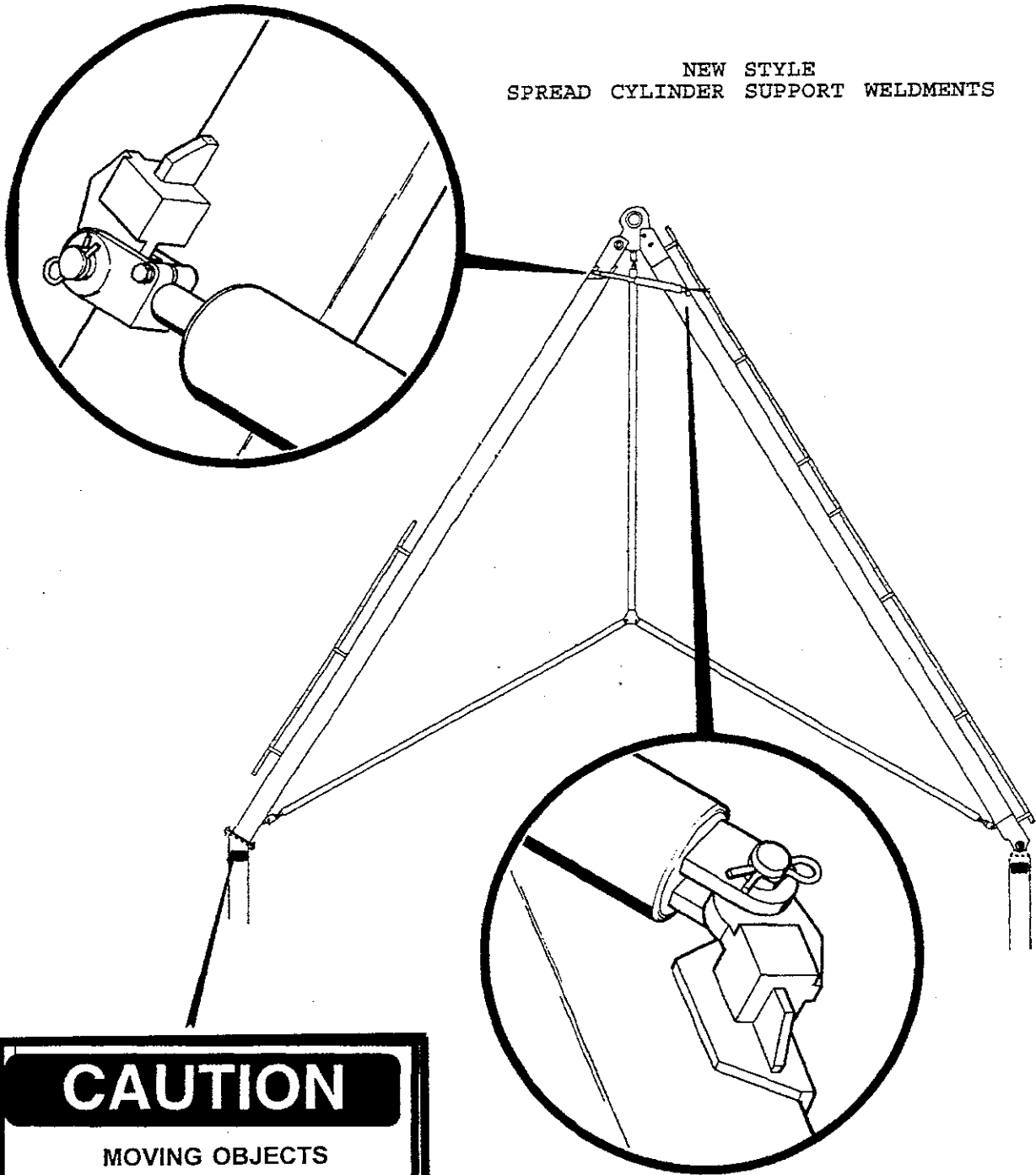
All work must be performed by qualified personnel, capable of understanding the function of the parts and their proper installation.

### NOTICE

Use only those components authorized, specified or provided by Chance Rides, Inc.

Chance Rides, Inc. SPECIFICALLY DISCLAIMS ANY LIABILITY for losses associated with any unauthorized alterations and/or modifications or additions and installations of unauthorized components.

NEW STYLE  
SPREAD CYLINDER SUPPORT WELDMENTS



**CAUTION**  
MOVING OBJECTS  
CAN CAUSE INJURY  
STAY CLEAR  
OF TOWER LEGS DURING  
SET-UP AND TEAR-DOWN.

APPLY DECAL TO STUB TOWERS  
(4 PLACES)