



**CHANCE RIDES, INC.**  
4219 Irving  
Wichita, KS 67277-2328  
U.S.A.  
Phone: 1-800-242-6231 • FAX: 1-316-942-7416  
Website: [www.rides.com](http://www.rides.com)  
E-mail: [rides@rides.com](mailto:rides@rides.com)

Bulletin No:	B402R1255-A
Release Date:	May 24, 2001
Effective Date:	May 24, 2001
Supersedes:	B402R1255-0
Completion Date:	Immediately
Page:	1 of 7

# SERVICE BULLETIN

Ride Manufacturer: CHANCE RIDES, INC.      Affected Production Dates: All

Ride Name: WIPEOUT      Affected Serial Nos.: All units

Model No.: 402

**Abstract of Issue:**

Lap Bar Latch Inspection and Maintenance

**Reason For Release:**

**Service Bulletin B402R1255-0 is superseded by this bulletin and is no longer in effect.**

Chance Rides, Inc. has become aware of an incident where a lap bar on the WIPEOUT amusement ride opened during the operation of the ride. This was due to incomplete engagement of the latching mechanism for the lap bar. In order to maintain the original level of passenger safety, all lap bar latches must be maintained per the manufacturer's specifications.

This bulletin is being released to provide detailed inspection and maintenance instructions on the lap bar latch mechanism. Operation of the ride with incorrectly maintained or improperly adjusted lap bar latches can result in serious personal injury to passengers.

**Detail of Issue:**

Chance Rides, Inc. requires all owner/operators of the above noted WIPEOUT amusement rides to immediately inspect the lap bar latches on every vehicle to ensure that they operate exactly as intended.

The lap bar latches must be maintained per the manufacturer's specifications to provide safety to the passengers. The procedures detailed in this bulletin must be performed daily, and anytime the latch is disassembled or replacement parts are installed.



**CHANCE RIDES, INC.**  
4219 Irving  
Wichita, KS 67277-2328  
U.S.A.  
Phone: 1-800-242-6231 • FAX: 1-316-942-7416  
Website: [www.rides.com](http://www.rides.com)  
E-mail: [rides@rides.com](mailto:rides@rides.com)

Bulletin No:	B402R1255-A
Release Date:	May 24, 2001
Effective Date:	May 24, 2001
Supersedes:	B402R1255-0
Completion Date:	Immediately
Page:	2 of 7

Ride Manufacturer: CHANCE RIDES, INC. Affected Production Dates: All

Ride Name: WIPEOUT Affected Serial Nos.: All units

Model No.: 402

Action to be taken:

All work must be performed by qualified personnel, capable of understanding the function of the parts and their proper installation.

**NOTICE**

Use only those components authorized, specified or provided by Chance Rides, Inc.

Chance Rides, Inc. **SPECIFICALLY DISCLAIMS ANY LIABILITY** for losses associated with any unauthorized alterations and/or modifications or additions and installations of unauthorized components.

**Lap Bar Latch Inspection / Maintenance Procedure**

Perform the following inspection on every lap bar latch immediately. Thereafter, perform the procedure daily, and anytime the latch is disassembled or replacement parts are installed.

**NOTE:** Perform each step in the sequence given. Refer to the illustrations for identification of specific components.

*If, for any reason, the lap bar latches cannot be adjusted exactly as described, do not operate the ride. Contact the Chance Customer Service Department immediately.*

1. Make sure the low air warning devices are operating properly. The ride is equipped with an indicator light and an audible alarm which must come on when air pressure at the tanks is below 65-70 psi.
2. The air pressure to the lap bar lock cylinders must be set to 40 psi. If necessary, adjust the air pressure at the regulator, located near the compressor.



**CHANCE RIDES, INC.**  
4219 Irving  
Wichita, KS 67277-2328  
U.S.A.  
Phone: 1-800-242-6231 • FAX: 1-316-942-7416  
Website: [www.rides.com](http://www.rides.com)  
E-mail: [rides@rides.com](mailto:rides@rides.com)

Bulletin No:	B402R1255-A
Release Date:	May 24, 2001
Effective Date:	May 24, 2001
Supersedes:	B402R1255-0
Completion Date:	Immediately
Page:	3 of 7

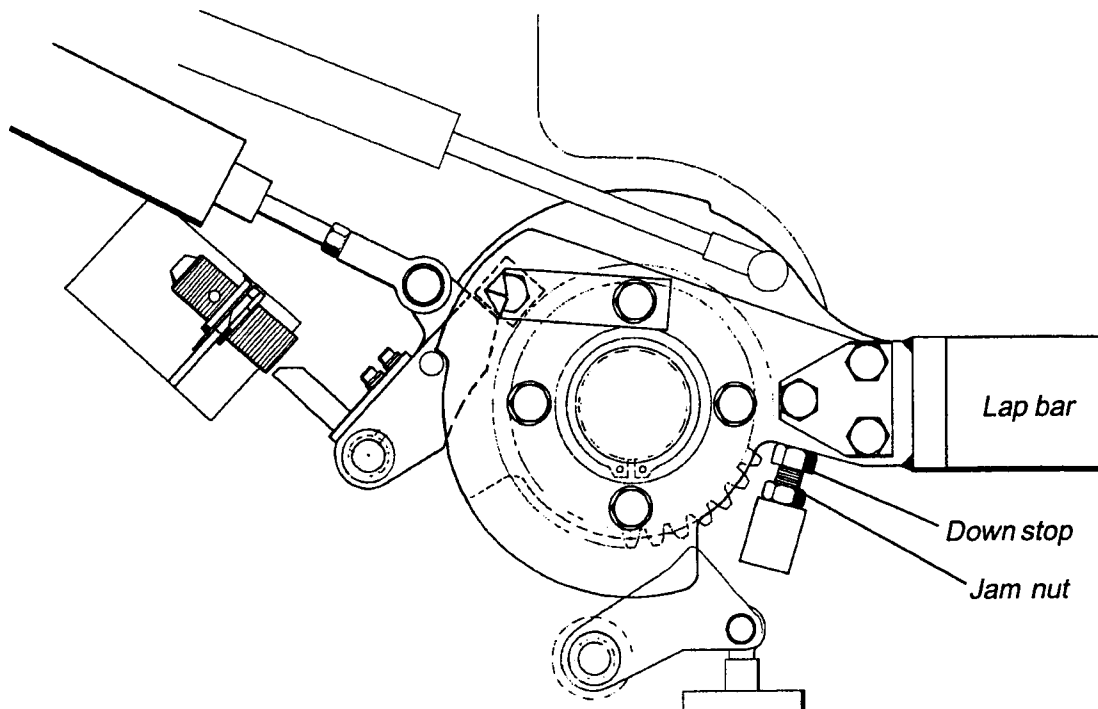
Ride Manufacturer: CHANCE RIDES, INC.      Affected Production Dates: All

Ride Name: WIPEOUT      Affected Serial Nos.: All units

Model No.: 402

Action to be taken (continued):

3. Check that the lap bar is level in relation to the seat when pushed completely down. If necessary, loosen the jam nut and adjust the down stop, then tighten the jam nut.





**CHANCE RIDES, INC.**  
4219 Irving  
Wichita, KS 67277-2328  
U.S.A.  
Phone: 1-800-242-6231 • FAX: 1-316-942-7416  
Website: [www.rides.com](http://www.rides.com)  
E-mail: [rides@rides.com](mailto:rides@rides.com)

Bulletin No: B402R1255-A  
Release Date: May 24, 2001  
Effective Date: May 24, 2001  
Supersedes: B402R1255-0  
Completion Date: Immediately  
Page: 4 of 7

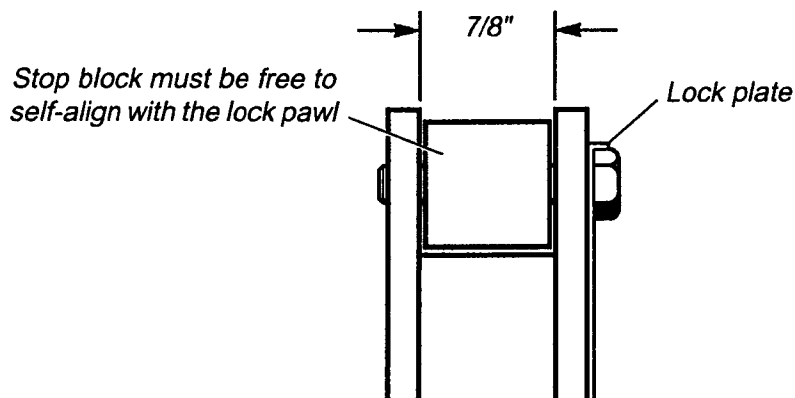
Ride Manufacturer: CHANCE RIDES, INC. Affected Production Dates: All

Ride Name: WIPEOUT Affected Serial Nos.: All units

Model No.: 402

Action to be taken (continued):

4. Check the engagement of the lock pawl to the stop block. The following conditions must ALL exist when the lock pawl and stop block are correctly adjusted.
  - When the lock pawl is fully engaged, the milled slot in the lock pawl must be aligned with the corner of the stop block, and the dowel must engage in the recessed area as shown. If the lock pawl does not engage deeply enough, loosen the jam nut and turn the rod end of the air cylinder to lengthen. The cylinder rod must engage at least seven threads of the rod end. Tighten the jam nut.
  - Check the clearance between the locking pawl and stop block. These parts must fit as close as possible and still function smoothly without binding as the lock pawl engages and disengages. If necessary, adjustment can be accomplished by removing the hex head capscrew securing the stop block and rotating the stop block as required (the hole in the stop block is drilled off center to facilitate adjustment). **DO NOT GRIND OR OTHERWISE MODIFY ANY OF THESE PARTS.**
  - Make sure the stop block can move between the plates to self-align with the lock pawl. The space between the plates must be maintained at 7/8". **DO NOT OVER TIGHTEN THE HEX HEAD CAPSCREW.** This will cause the stop block to bind. When the capscrew is snug, bend the lock plate tabs over the flats of the capscrew to prevent it from turning.





**CHANCE RIDES, INC.**  
4219 Irving  
Wichita, KS 67277-2328  
U.S.A.  
Phone: 1-800-242-6231 • FAX: 1-316-942-7416  
Website: [www.rides.com](http://www.rides.com)  
E-mail: [rides@rides.com](mailto:rides@rides.com)

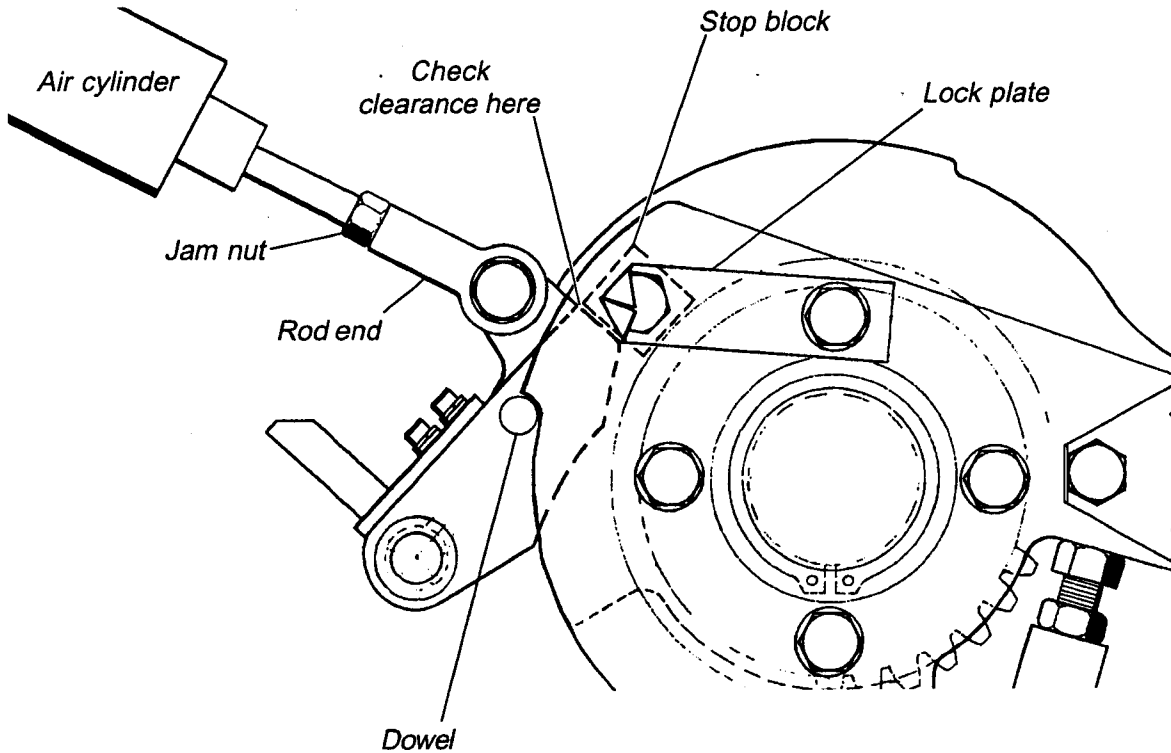
Bulletin No:	B402R1255-A
Release Date:	May 24, 2001
Effective Date:	May 24, 2001
Supersedes:	B402R1255-0
Completion Date:	Immediately
Page:	5 of 7

Ride Manufacturer: CHANCE RIDES, INC.      Affected Production Dates: All

Ride Name: WIPEOUT      Affected Serial Nos.: All units

Model No.: 402

Action to be taken (continued):





**CHANCE RIDES, INC.**  
4219 Irving  
Wichita, KS 67277-2328  
U.S.A.  
Phone: 1-800-242-6231 • FAX: 1-316-942-7416  
Website: [www.rides.com](http://www.rides.com)  
E-mail: [rides@rides.com](mailto:rides@rides.com)

Bulletin No:	B402R1255-A
Release Date:	May 24, 2001
Effective Date:	May 24, 2001
Supersedes:	B402R1255-0
Completion Date:	Immediately
Page:	6 of 7

Ride Manufacturer: CHANCE RIDES, INC. Affected Production Dates: All

Ride Name: WIPEOUT Affected Serial Nos.: All units

Model No.: 402

Action to be taken (continued):

5. Check the proximity switch as follows:

- Check the gap between the proximity switch and the adjustable block. The gap must be 3/32". If adjustment is necessary, bend up the locking tabs from the switch adjusting nuts and loosen the nuts. Adjust the position of the switch to obtain the correct gap, then tighten the adjusting nuts and bend up the locking tabs over the flats of each nut.
- Check the position of the adjustable block. The block is correctly adjusted when the indicator light on the switch is on when the lock pawl is fully engaged,. When the locking pawl is moved slightly from the fully engaged position, the light must go out.

**NOTE:** *The indicator light on the sweep comes on and off opposite of the indicator light on the switch.*

If adjustment is required, loosen the two screws on the adjustable block. The block has slotted holes and can be moved up or down as required to obtain the correct adjustment. Tighten the screws on the adjustable block.

- Check the operation of the lap bar interlock system exactly as described in the *WIPEOUT Service Manual* (see page 16 in the "Maintenance Manual" section). This procedure requires two people.

6. With the ride ready to operate, close and latch the lap bars. Make sure each air cylinder is holding its lock pawl in the fully engaged position. Try to release the lap bar latch by pulling the manual release lever toward the cylinder. It must not be easily retracted by hand.



**CHANCE RIDES, INC.**  
4219 Irving  
Wichita, KS 67277-2328  
U.S.A.  
Phone: 1-800-242-6231 • FAX: 1-316-942-7416  
Website: [www.rides.com](http://www.rides.com)  
E-mail: [rides@rides.com](mailto:rides@rides.com)

Bulletin No:	B402R1255-A
Release Date:	May 24, 2001
Effective Date:	May 24, 2001
Supersedes:	B402R1255-0
Completion Date:	Immediately
Page:	7 of 7

Ride Manufacturer: CHANCE RIDES, INC.      Affected Production Dates: All

Ride Name: WIPEOUT      Affected Serial Nos.: All units

Model No.: 402

Action to be taken (continued):

