



NUMBER: B391R1018-0

DATE: Oct. 26, 1987

SUPERSEDES:

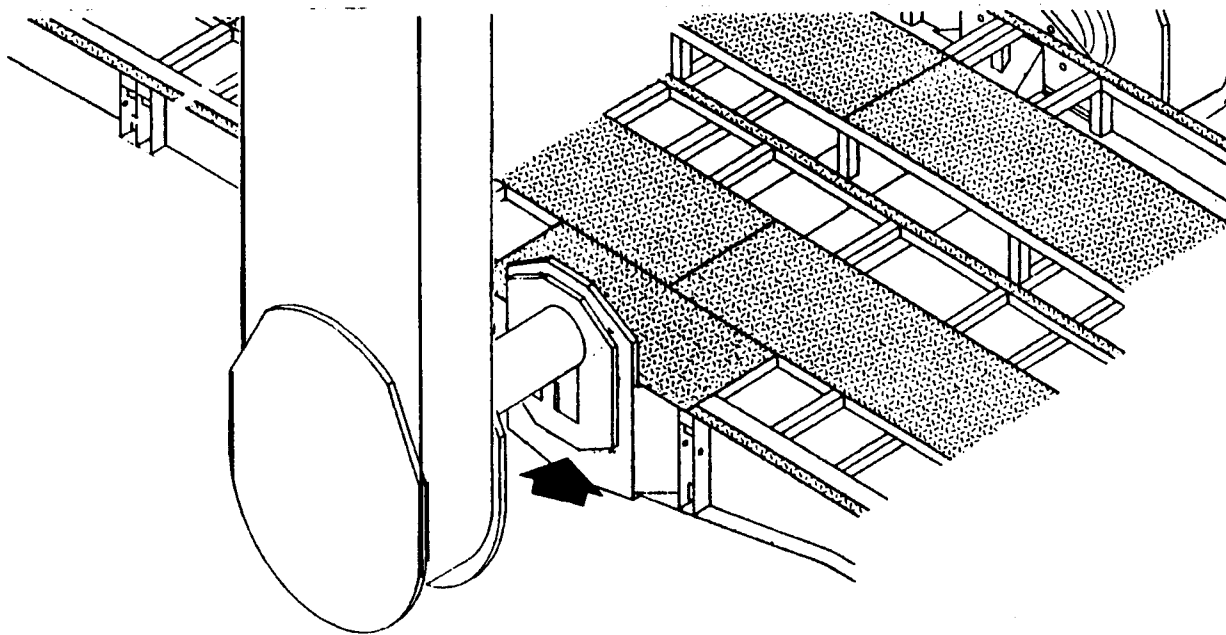
SERVICE BULLETIN

Effective Serial Number: 391-00586 through 391-00887

Ride: FALLING STAR

Subject: Inspection Of Vehicle
Mounting Plate

It has been determined by CHANCE RIDES, INC. that the joint between the vehicle and the front shaft on the FALLING STAR can deflect under certain conditions.

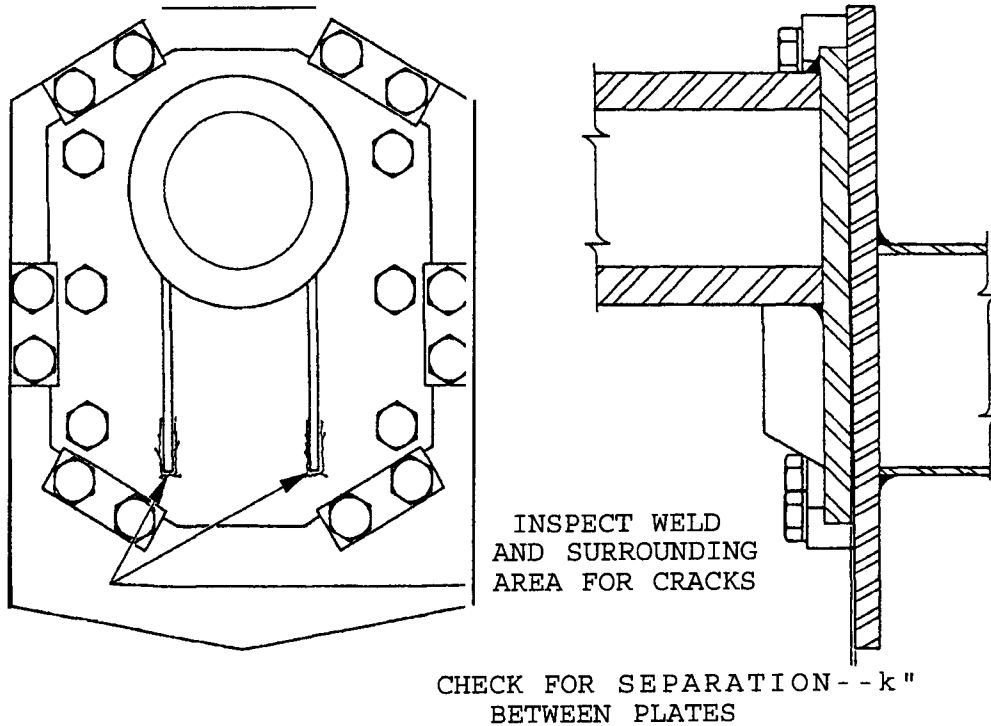


The owners of the above noted FALLING STAR amusement rides are therefore required to inspect their rides as described in this bulletin. Perform the inspection using the instructions on the reverse side of this bulletin. Return the Certification Of Compliance within fifteen (15) days from receipt of the bulletin.

The inspection must be performed by qualified personnel, capable of understanding the function of the parts and their proper installation. If there are any questions regarding the instructions or this inspection, contact the CHANCE CUSTOMER SERVICE DEPARTMENT.

INSPECTION PROCEDURE

With the vehicle installed on the sweeps and the capscrews tightened to 700-840 ft-lb., inspect the front stub shaft as shown in the illustration below.



Inspect the weld and the parent metal surrounding the weld. Also, make sure there is no separation between the two plates as shown.

If cracks, separation or any unusual condition exist, contact the CHANCE CUSTOMER SERVICE DEPARTMENT immediately. DO NOT OPERATE THE RIDE.