



NUMBER: B408R1180-0

DATE: June 20, 1997

SUPERSEDES:

SERVICE BULLETIN

Effective Serial Number: All Units

Ride: CHAOS

Subject: Lap Bar Indicator Light
Wiring Rework

Chance Rides, Inc., has developed a rework procedure for the lap bar indicator light wiring for the CHAOS amusement ride. The rework consists of securing the wire harness at the light to restrict movement of the wires and prevent fatiguing and breaking of the wires.

All owner/operators of the above noted amusement rides are required to perform the rework, using the installation instructions and parts furnished with this bulletin.

All work must be performed by qualified personnel, capable of understanding the function of the parts and their proper installation.

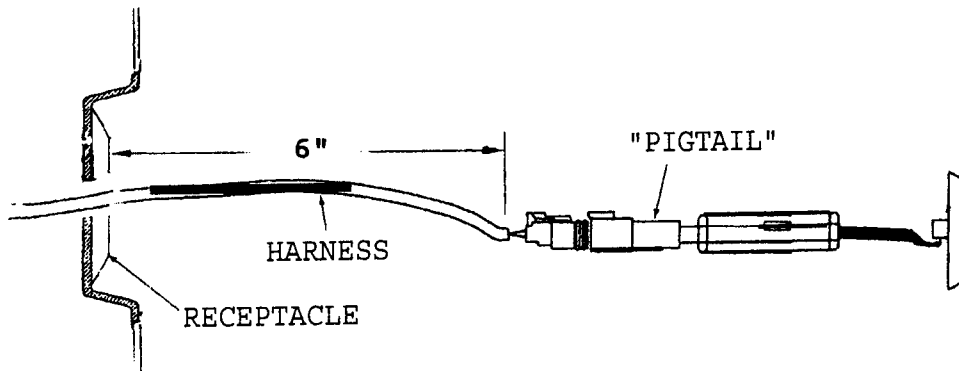
NOTICE

Use only those components authorized, specified or provided by Chance Rides, Inc.

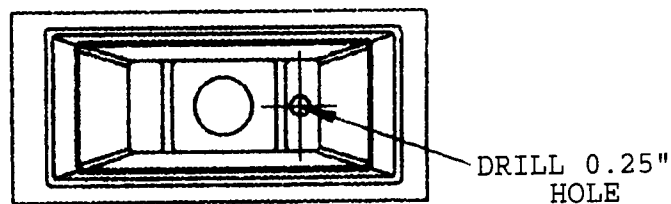
Chance Rides, Inc. SPECIFICALLY DISCLAIMS ANY LIABILITY for losses associated with any unauthorized alterations and/or modifications or additions and installations of unauthorized components.

INSTALLATION INSTRUCTIONS

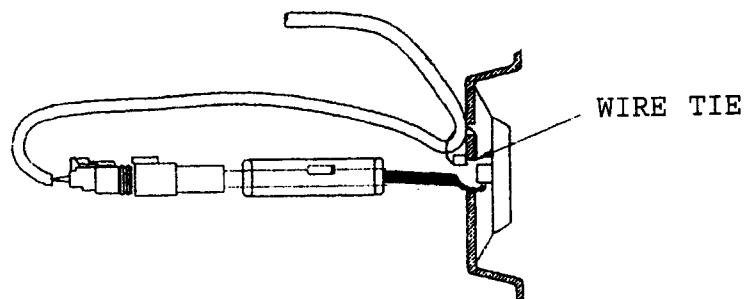
1. Turn off power to the ride, or open the lap bars to turn all lap bar indicator lights off. The indicator lights are located at the center of each vehicle near the passengers' feet.
2. Remove the light using a screw driver. Pull the "pigtail" and harness out of the receptacle until about six inches of the harness are outside the vehicle,



3. Drill a 0.25" hole through the fiberglass behind the receptacle as shown. Be careful not to damage any wiring behind the opening.



4. Insert a wire tie (part number 68855200) through the small hole and pull back through the large opening. Needle-nose pliers work well.



5. Attach the wire tie around the harness (not the "pigtail") and pull until snug. Cut off excess wire tie.
6. Push the wire tie head and harness back through the large opening.
7. Feed the remainder of the "pigtail" back inside the vehicle and install the light.
8. Remove the cover from the back of the vehicle. Locate the same harness and pull up gently to remove any slack from the harness. Secure the harness to the vehicle frame with another wire tie.