



NUMBER: B406R1139-0

DATE: SEPT. 3, 1993

SUPERSEDES:

SERVICE BULLETIN

Effective Serial Number: 40600193 THROUGH 40600693

Ride: CENTURY WHEEL

Subject: FENCE REWORK

Chance Rides, Inc. has become aware that on the CENTURY WHEEL it is possible for the side fences around the operator's pedestal to slide up and down in the connecting sockets if the operator leans against the back fence section. If the side fences were to come all of the way out of the connecting sockets, injury to the operator and/or damage to the fences could result.

Chance Rides, Inc. requires all owner's of the above noted CENTURY WHEEL amusement rides to perform the rework outlined in this bulletin. To properly perform this rework, order and install the following items, which are available at no charge if ordered within 90 days of the date on this bulletin.

<u>PART NUMBER</u>	<u>DESCRIPTION</u>	<u>QUANTITY</u>
25234000	Clevis Pin 1/4 x 7/8	2
65189900	R-Key 3/32	2

All work must be performed by qualified personnel, capable of understanding the function of the parts and their proper installation.

NOTICE

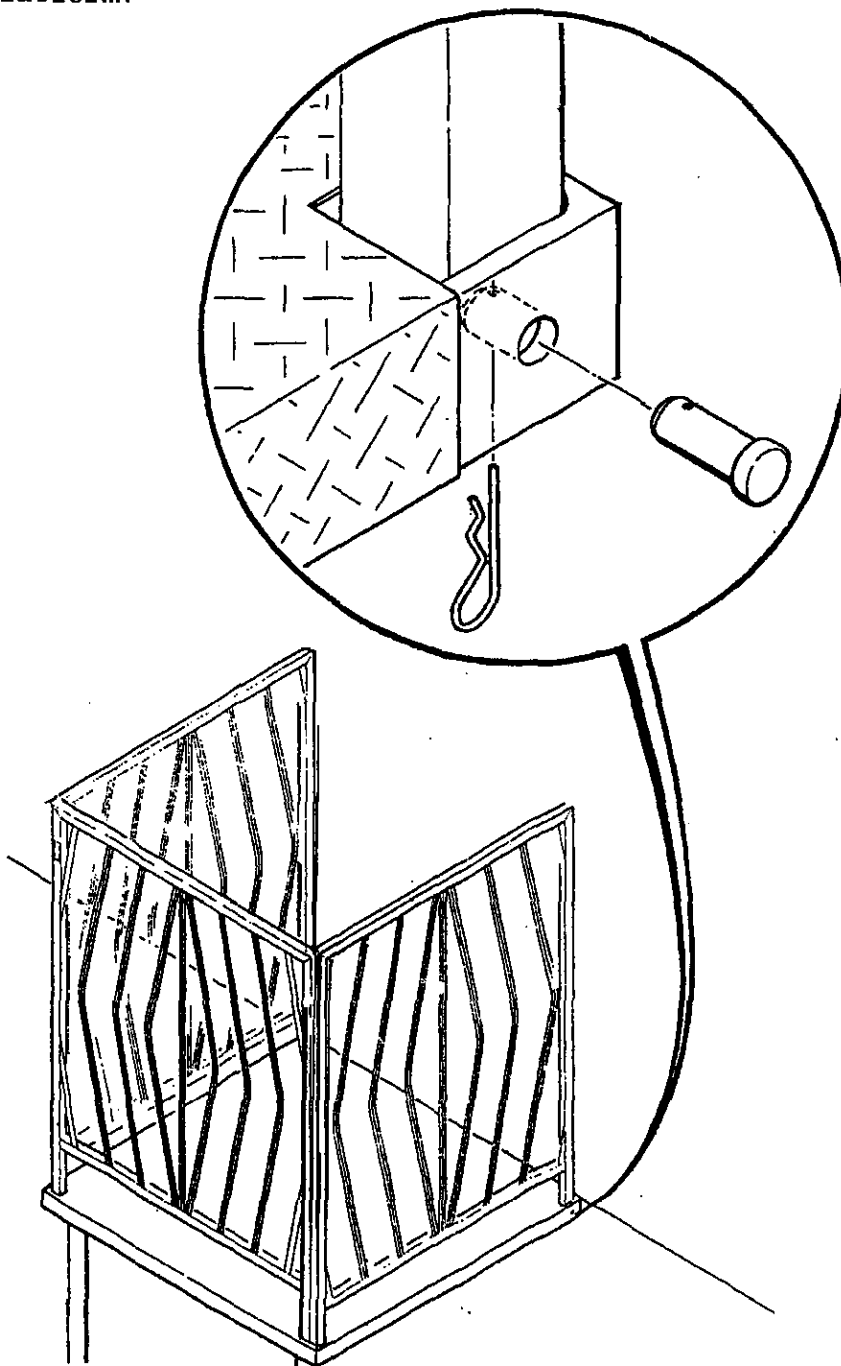
Use only those components authorized, specified or provided by Chance Rides, Inc.

Chance Rides, Inc. SPECIFICALLY DISCLAIMS ANY LIABILITY for losses associated with any unauthorized alterations and/or modifications or additions and installations of unauthorized components.

Follow the rework instructions in this bulletin and return the Certification Of Compliance within 15 days from receipt of parts.

REWORK INSTRUCTIONS

1. Install fences around operator's platform, making sure fences are properly seated in connecting sockets.
2. Centered in socket area, drill a 1/4 inch diameter hole (two places, opposite sides of platform) through side of platform and one side of the fence tube.
3. Insert clevis pin from outside and secure in place with R-key from underneath platform.





NUMBER: B406R1140-0

DATE: SEPT. 10, 1993

SUPERSEDES:

SERVICE BULLETIN

Effective Serial Number: 40600193 through 40600793

Ride: CENTURY WHEEL

Subject: Emergency Brake
Bracket Installation

Chance Rides, Inc. requires the use of the emergency air-operated brake on the CENTURY WHEEL during installation or gondolas to the ride and removal of gondolas from the ride. A bracket has been designed that will allow the emergency brake to be attached to the operator's control box so that the emergency brake can be used before the fence sections have been installed. Once the ride has been completely set up, the emergency brake can be moved to the fence bracket for operation.

Chance Rides, Inc. requires all owner/operators of the above noted amusement rides to order and install the emergency brake bracket as outlined in the installation instruction in this bulletin. Bracket and hardware are available at no charge if ordered within 90 days of the date on this bulletin.

All work must be performed by qualified personnel, capable of understanding the function of the parts and their proper installation.

NOTICE

Use only those components authorized, specified or provided by Chance Rides, Inc.

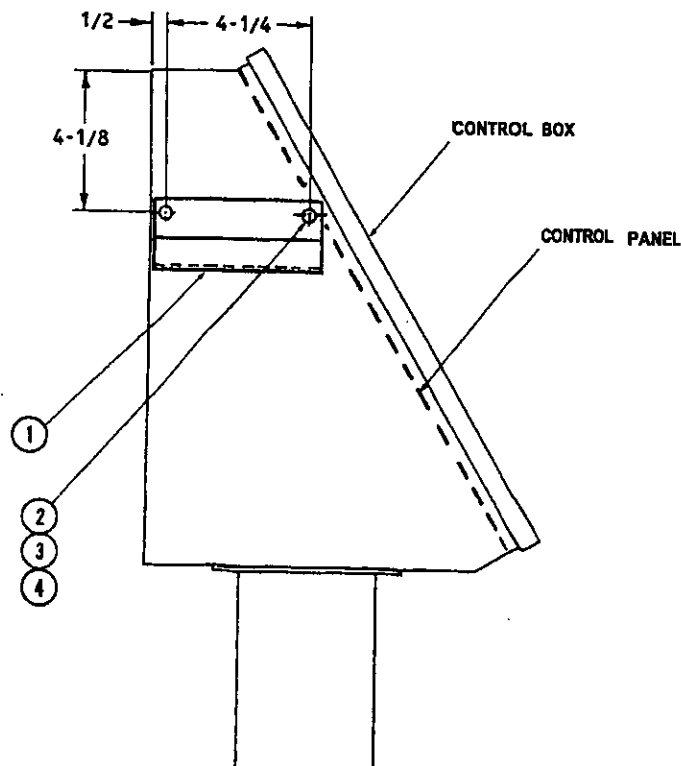
Chance Rides, Inc. SPECIFICALLY DISCLAIMS MY LIABILITY for losses associated with any unauthorized alterations and/or modifications or additions and installations of unauthorized components.

PARTS LIST

ITEM NO.	PART NUMBER	DESCRIPTION	QUANTITY
1	30887300	Bracket	1
2	61143800	1/4 - 20 x 1/2 Mach Screw	2
3	68530200	1/4 flat washer	2
4	64780800	Hex head locknut	2

INSTALLATION INSTRUCTIONS

1. Make sure power source has been disconnected to the operator's control pedestal
2. Remove and keep the four screws holding the control panel to the control box, be sure wires are out of the way for installation of bracket.
3. Position bracket (Item 1) on outside of control box as shown.
4. Drill two 9/32 inch diameter holes on side of box to match bracket.
5. Attach bracket with machine screw (Item 2), flat washer (Item 3), and locknut (Item 4).
6. Re-install control panel with original hardware removed in step 2.





NUMBER: B406R1141-0

DATE: OCT. 8, 1993

SUPERSEDES:

SERVICE BULLETIN

Effective Serial Number: 40600293 through 40600993

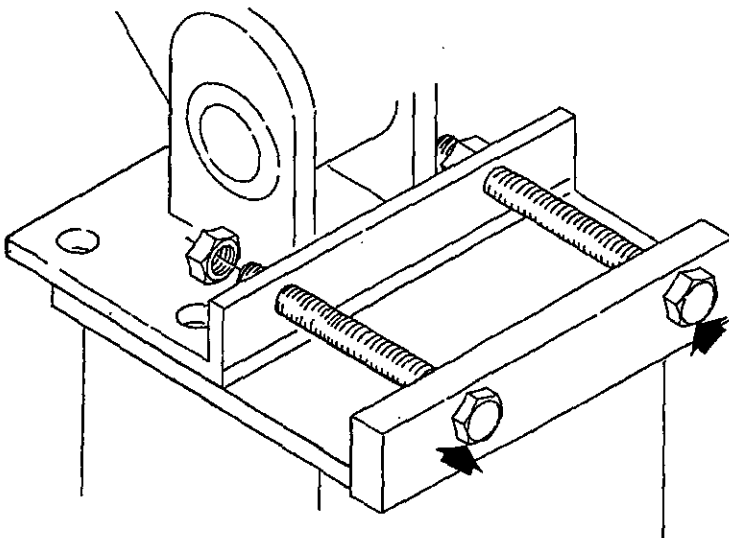
Ride: CENTURY WHEEL

Subject: Pivot Plate Draw Bolt

Chance Rides, Inc. has designed a new pivot plate draw bolt for the above noted CENTURY WHEEL amusement rides. This bolt will allow the aligning of the rear tower legs to the stub towers in one operation, as opposed to the three step process now used, making the setup of the ride more time efficient.

Chance Rides, Inc. requires all owner/operators of the above noted CENTURY WHEELS to order pivot plate draw bolt, part number 30741900 and the mating nut, part number 64752800. A quantity of four (4) each is required, two for each rear tower leg. These parts are available at no charge, if ordered within 90 days of the date on this bulletin.

Instructions in the service manual for correct use of the draw bolt during setup of the ride.



All work must be performed by qualified personnel, capable of understanding the function of the parts and their proper installation.

NOTICE

Use only those components authorized, specified or provided by Chance Rides, Inc.

Chance Rides, Inc. SPECIFICALLY DISCLAIMS MY LIABILITY for losses associated with any unauthorized alterations and/or modifications or additions and installations of unauthorized components.



NUMBER: A406R1143-0

DATE: OCT. 22, 1993

SUPERSEDES:

SAFETY ALERT

Effective Serial Number: All Units

Ride: CENTURY WHEEL

Subject: Sweep and Spreader Lighting

Chance Rides, Inc. has become aware of at least one case in which all of the bases of the sweep lights enclosed by one light cover on the CENTURY WHEEL amusement ride broke. When this occurred, the section fell from the ride.

Chance Rides, Inc. requires all owner/operators of the above noted amusement rides to follow the rework safety precautions in this Safety Alert Bulletin. Failure to follow the rework instructions outlined in this bulletin prior to the operation of the ride can result in injury to patrons and/or employees.

All work must be performed by qualified personnel, capable of understanding the function of the parts and their proper installation.

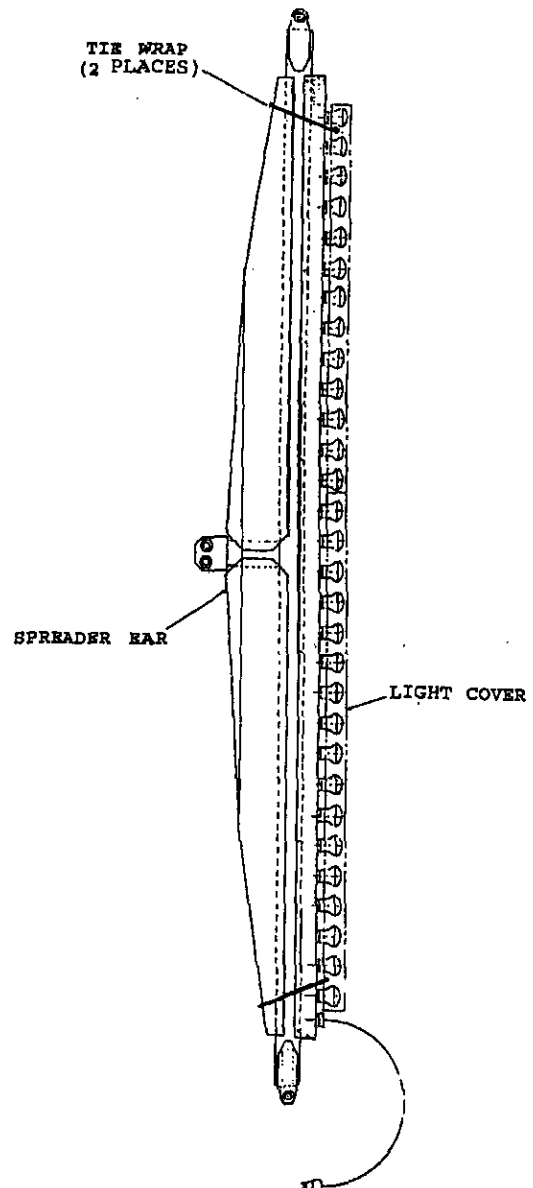
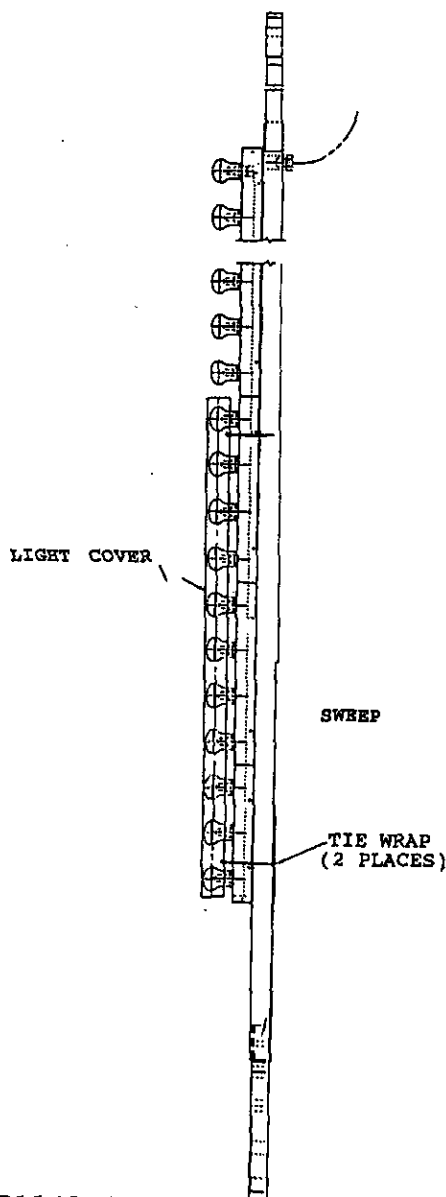
NOTICE

Use only those components authorized, specified or provided by Chance Rides, Inc.

Chance Rides, Inc. SPECIFICALLY DISCLAIMS ANY LIABILITY for losses associated with any unauthorized alterations and/or modifications or additions and installations of unauthorized components.

Rework Instructions

1. Remove the #10 x 2-1/4 long machine screw in the light covers located on each sweep.
2. Using 3/16 black tie wraps, secure the light covers to the sweeps. Insert one tie wrap through the holes where the machine screws were removed and fasten around the sweep. Secure each light cover at two locations. NOTE: If cover only contains one hole, drill a second hole at the opposite end of cover for the second tie wrap.
3. Perform the above steps on all spreader bar light covers as well as all sweep light covers.





NUMBER: B406R1146-0

DATE: JAN. 7, 1994

SUPERSEDES:

SERVICE BULLETIN

Effective Serial Number: 40600193 through 40601393

Ride: CENTURY WHEEL

Subject: Handling Platform Rework

Chance Rides, Inc. has become aware that it is possible for the removable handling platform on which the gondola handling cart is used, to slide sideways and drop down into the trailer frame. If this occurs damage to gondola and possible injury to personnel can result.

Chance Rides, Inc. requires all owner/operators of the above noted amusement rides to order and install kit number K406R1146-0. This kit is available at no charge if ordered within 90 days of the date on this bulletin. Use the instructions in this bulletin to install the kit, complete the Certificate Of Compliance and return it to Chance Rides, Inc. within fifteen (15) days of the receipt of the kit.

All work must be performed by qualified personnel, capable of understanding the function of the parts and their proper installation.

NOTICE

Use only those components authorized, specified or provided by Chance Rides, Inc.

Chance Rides, Inc. SPECIFICALLY DISCLAIMS ANY LIABILITY for losses associated with any unauthorized alterations and/or modifications or additions and installations of unauthorized components.

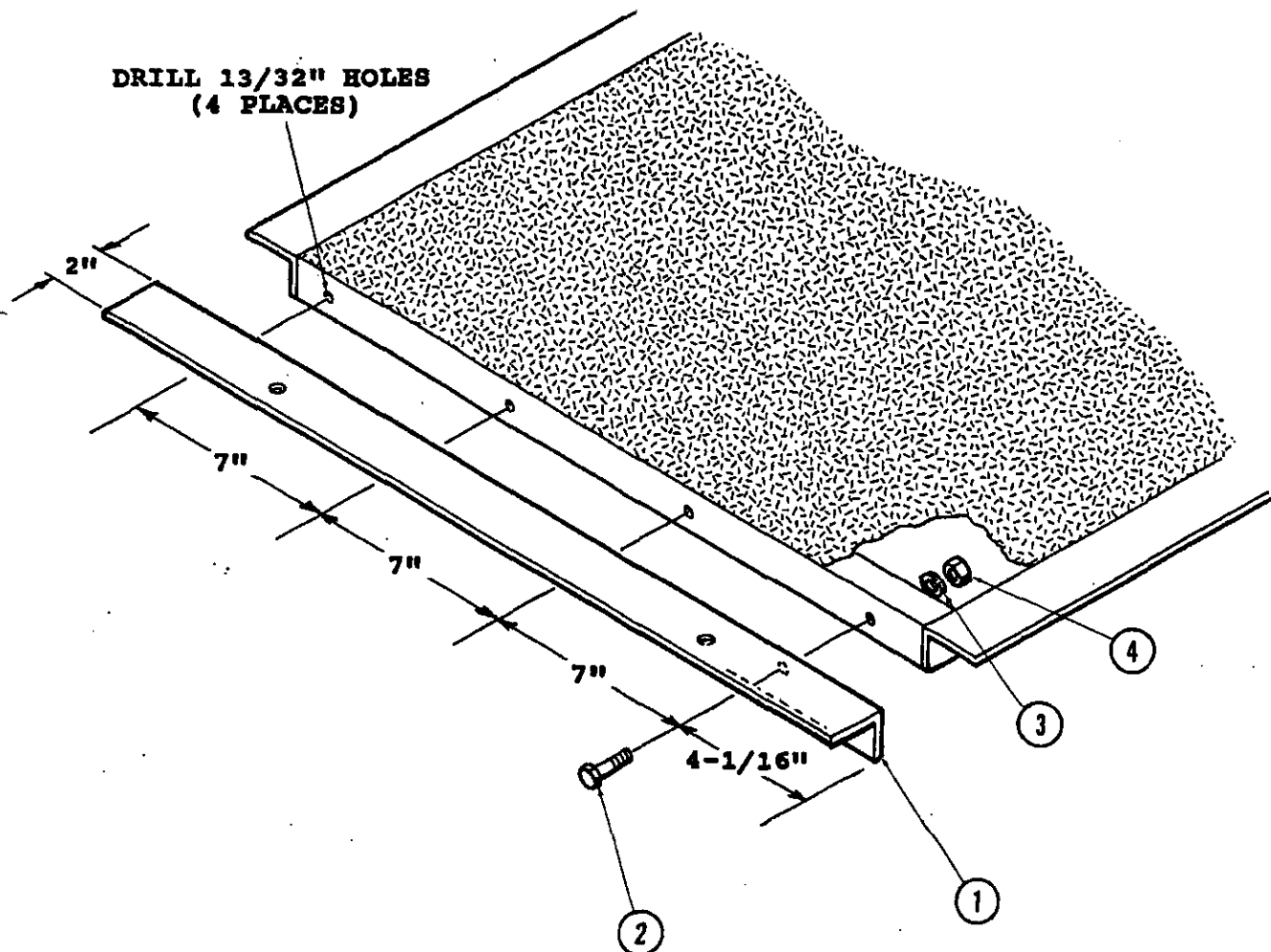
KIT K406R1146-0 PARTS LIST

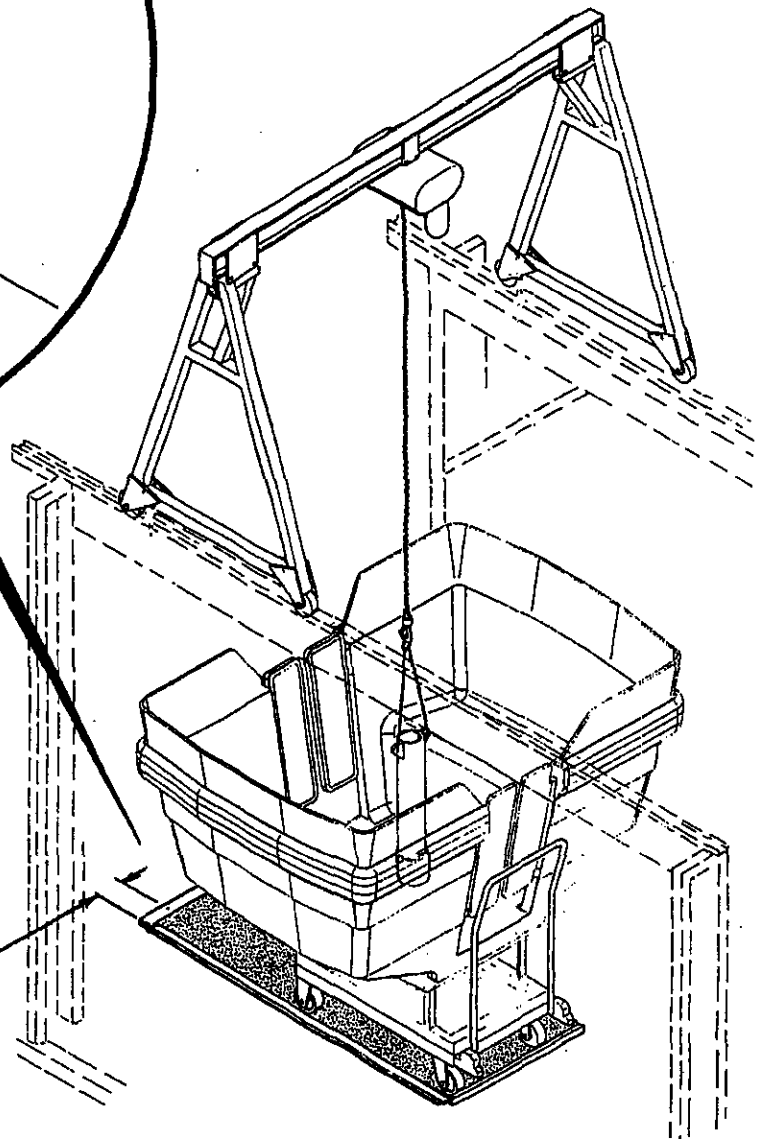
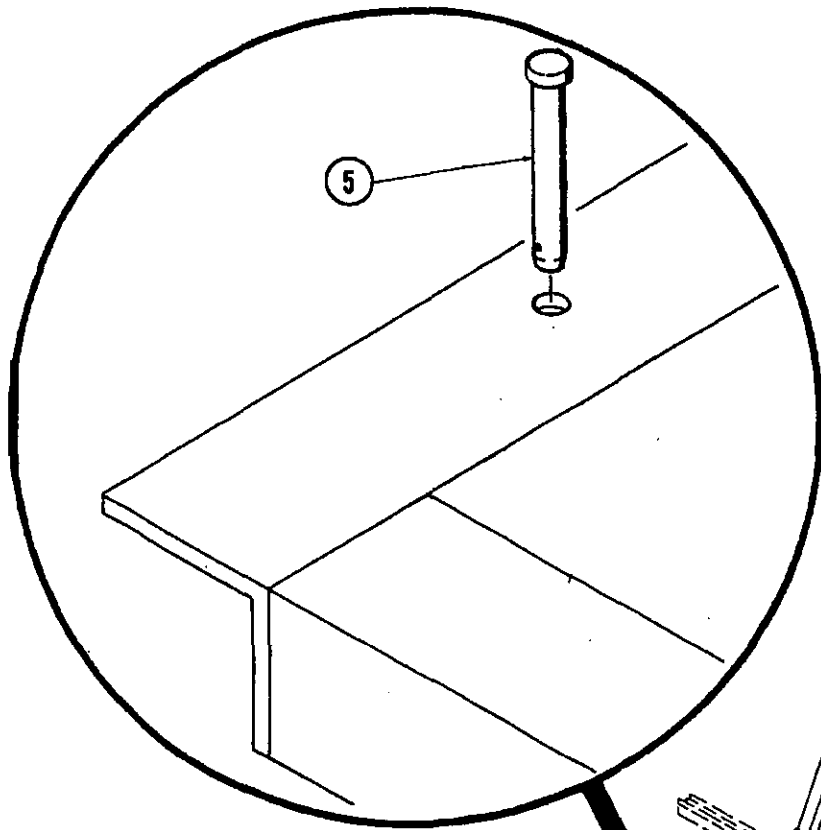
<u>Item No.</u>	<u>Part Number</u>	<u>Description</u>	<u>Quantity</u>
1	30222600	Angle 2 x 1-1/2 x 1/8 x 29-1/8	1
2	60767600	H.H.C.S. 3/8-16 x 2-1/4 Gr. 5	4
3	68530900	Washer wrot 3/8	4
4	64781600	Locknut 3/8 - 16	4
5	25238900	Clevis Pin 1/4 x 2	2

Installation Instructions

1. Clamp angle (Item 1) to front edge of handling platform as shown.
2. Drill four (4) $13/32$ " diameter holes through angle and $1-1/4$ " square tubing of platform as shown.
3. Secure angle to platform with hexhead capscrews (Item 2), washers (Item 3) and locknuts (Item 4).
4. Position handling platform in place on trailer. Drill two (2) $9/32$ " diameter holes through angle and trailer structure. Clevis pins (Item 5) are inserted through holes to secure handling platform in place during set-up and tear down.

**DRILL $13/32$ " HOLES
(4 PLACES)**





DRILL 9/32" HOLES (2 PLACES)
6" FROM EACH END OF ANGLE



RECEIVED

APR 13 1 57 PM '94

DIV. OF AMUSEMENT
STANDARDS

NUMBER: B406R1149-0

DATE: APR. 4, 1994

SUPERSEDES:

America's Largest Manufacturer of Amusement Rides

SERVICE BULLETIN

Effective Serial Number: 406-00193 through 406-01093

Ride: CENTURY WHEEL

Subject: Gondola Carrier Rework

Chance Rides, Inc. has become aware from field experience, that the gondola carrier on the above noted amusement rides can develop cracks in the crossmembers on which the gondola stacks sit and that the carrier wheel axles can break free from the carrier. Both of these items require rework as outlined in this bulletin.

Chance Rides, Inc. requires all owner/operators of the above noted CENTURY WHEEL rides to order and install kit number K406R1149-0. This kit is available at no charge if ordered within 90 days of the date of this bulletin. Use the instructions in this bulletin to install the kit. All work must be completed and the Certification Of Compliance returned to Chance Rides, Inc. within fifteen (15) days of the receipt of the kit.

All work must be performed by qualified personnel, capable of understanding the function of the parts and their proper installation.

NOTICE

Use only those components authorized, specified or provided by Chance Rides, Inc.

Chance Rides, Inc. SPECIFICALLY DISCLAIMS ANY LIABILITY for losses associated with any unauthorized alterations and/or modifications or additions and installations of unauthorized components.

Kit K406R1149-0 Parts List

<u>Item No.</u>	<u>Part Number</u>	<u>Description</u>	<u>Quantity</u>
1	30221700	Angle 1-3/4 x 1-3/4 x 1/4	5
2	35191500	Axle Pin	8

NOTE: To install this kit, as outlined in this bulletin, the gondolas must be unloaded from the carrier and the carrier completely removed from the trailer frame.

Installation Instructions for Kit K406R1149-0

1. Inspect front and rear sides of the carrier crossmembers for cracks. If any are present, contact Chance Rides, Inc. Customer Service Department for repair procedures.
2. Position and weld angles as shown in Illustration A.
3. Angles should be added at 5 locations, front and back of first two crossmembers and front only of third crossmember.

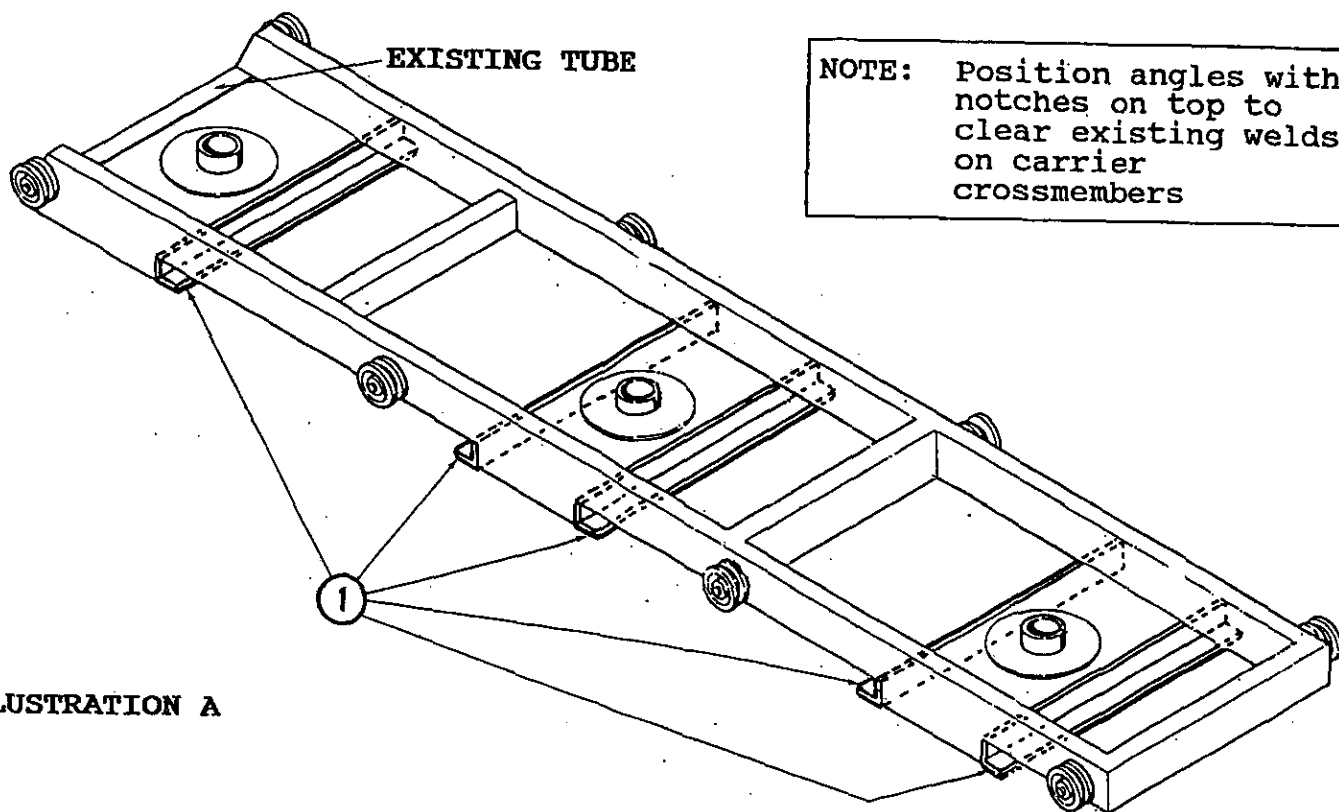
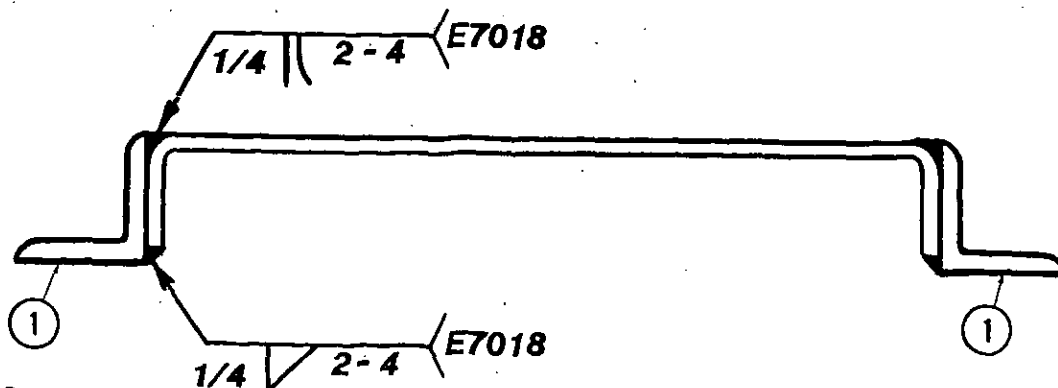
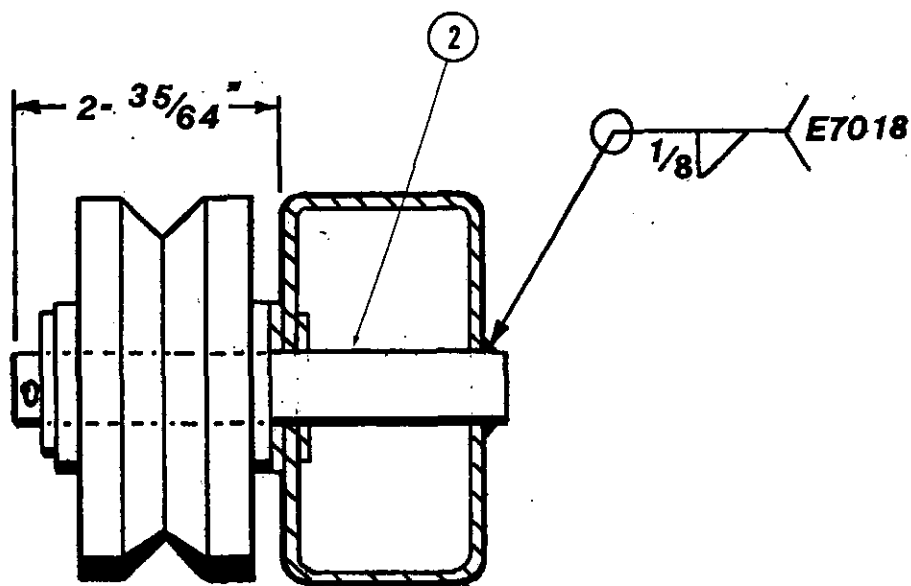


ILLUSTRATION A



4. Grind off existing welds, remove and discard axles, eight (8) places.
5. Install new axles as shown in Illustration B.
6. Weld axle end to carrier using E7018 welding rod.
7. Repeat until all eight (8) axles have been welded in place.

ILLUSTRATION B





NUMBER: B406R1160-0

DATE: 'MAY 23, 1994

SUPERSEDES:

SERVICE BULLETIN

Effective Serial Number: 40600193 through 40601894

Chance Rides, Inc. SPECIFICALLY DISCLAIMS ANY LIABILITY for losses associated with rides produced by Chance Manufacturing Company, Inc.

Ride: CENTURY WHEEL

Subject: Spreader Bar Rack Rework

Chance Rides, Inc. has become aware that the racks welded to the front of the trailer on the above noted CENTURY WHEEL amusement rides, which supports the spreader bar for transporting, could fill with water. If this occurs, rusting from the inside out could cause premature deterioration of these tubes.

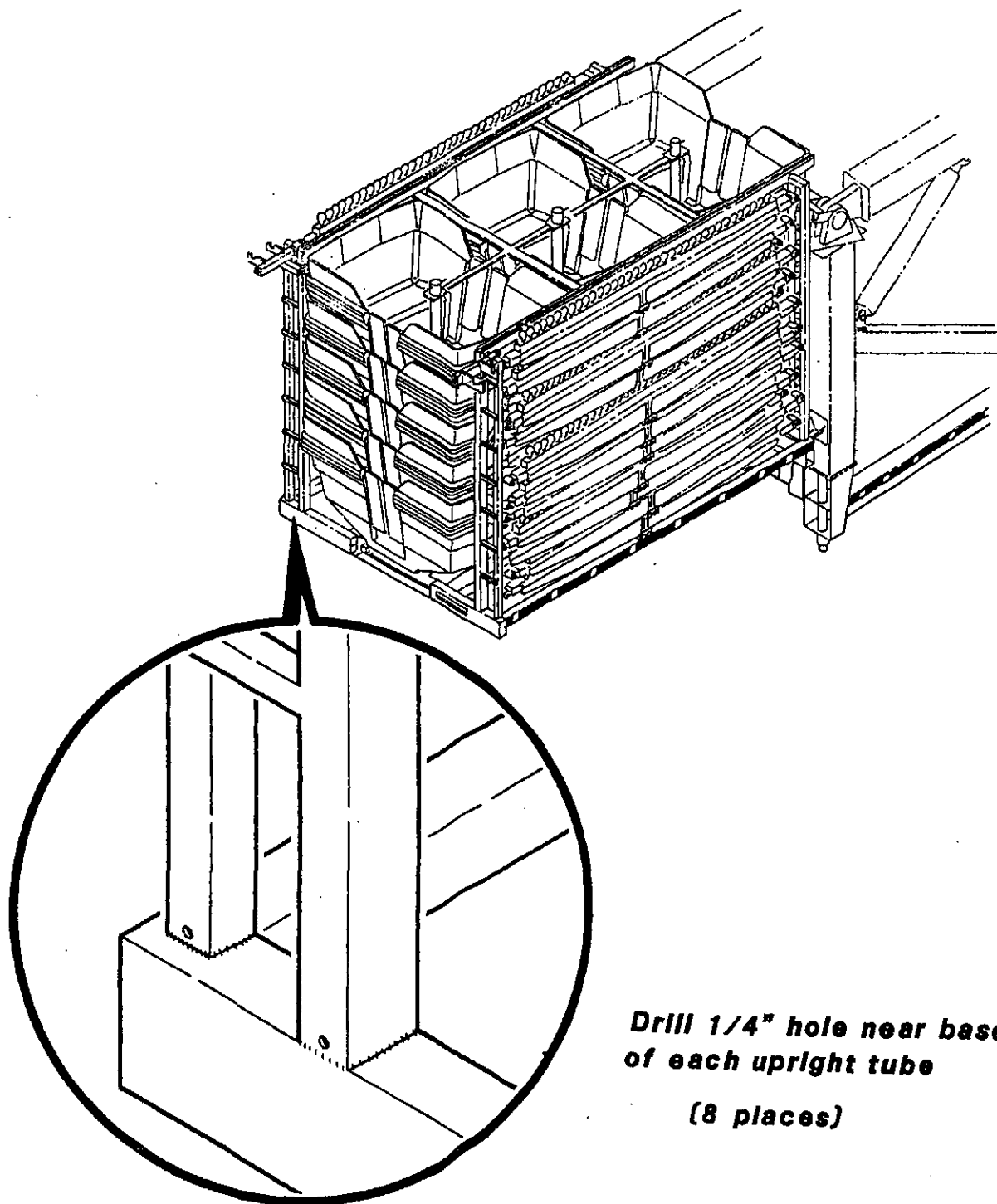
Chance Rides, Inc. requires all owner/operators of the above noted CENTURY WHEELS to perform the rework to the spreader racks, as outlined in this bulletin.

All work must be performed by qualified personnel, capable of understanding the function of the parts and their proper installation.

NOTICE

Use only those components authorized, specified or provided by Chance Rides, Inc.

Chance Rides, Inc. SPECIFICALLY DISCLAIMS ANY LIABILITY for losses associated with any unauthorized alterations and/or modifications or additions and installations of unauthorized components.



**Drill 1/4" hole near base
of each upright tube
(8 places)**



NUMBER: B406R1153-0

DATE: JUNE 10, 1994

SUPERSEDES:

SERVICE BULLETIN

Effective Serial Number: 406-00193 through 406-01894

Ride: CENTURY WHEEL

Subject: Torque Wrench Support Kit

Chance Rides, Inc. has designed a new kit for the above noted CENTURY WHEEL amusement rides. This kit eliminates the need for someone to hold the torque wrench extension while the tower legs are being bolted to the stub towers.

Chance Rides, Inc. requires all owner operators of the above noted CENTURY WHEEL rides to order and install kit number K406R1153-0. Each kit contains all items needed to rework one ride. Installation instructions are included with the kit. Installation of the kit must be within fifteen (15) days of the receipt of the kit and the completed Certification Of Compliance must be returned to Chance Rides, Inc. Kit number K406R1153-0 is offered free of charge if ordered within 90 days of the date on this bulletin.

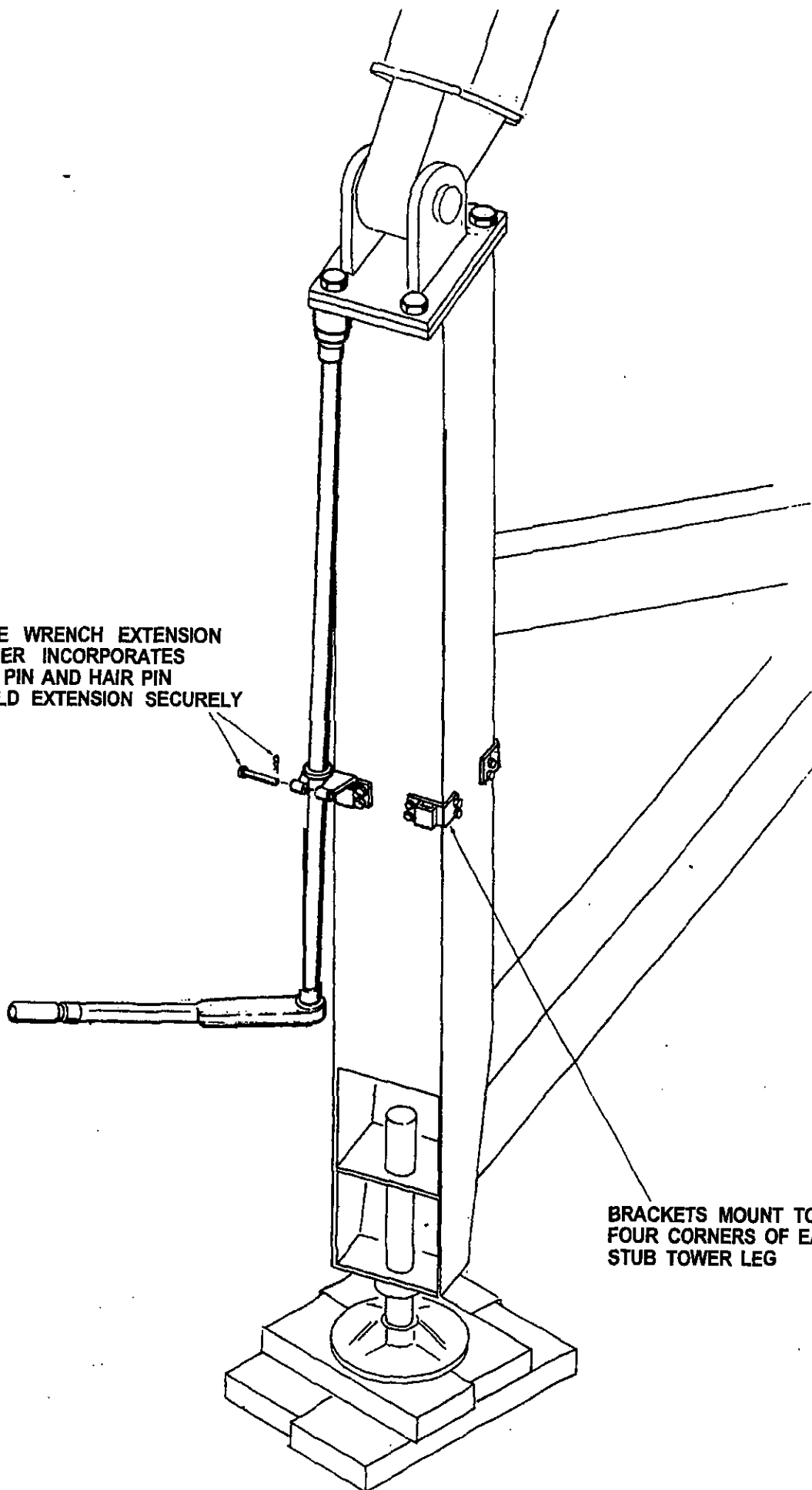
All work must be performed by qualified personnel, capable of understanding the function of the parts and their proper installation.

NOTICE

Use only those components authorized, specified or provided by Chance Rides, Inc.

Chance Rides, Inc. SPECIFICALLY DISCLAIMS ANY LIABILITY for losses associated with any unauthorized alterations and/or modifications or additions and installations of unauthorized components.

TORQUE WRENCH EXTENSION
RETAINER INCORPORATES
TAPER PIN AND HAIR PIN
TO HOLD EXTENSION SECURELY



BRACKETS MOUNT TO ALL
FOUR CORNERS OF EACH
STUB TOWER LEG



RECEIVED

JUL 18 10 34 AM '94
NUMBER: B406R1158-0

DIV DATE: JULY 8, 1994
STANDARDS

SUPERSEDES:

America's Largest Manufacturer of Amusement Rides

SERVICE BULLETIN

Effective Serial Number: 40600293 and on

Ride: CENTURY WHEEL

Subject: Cradle Brace Decal

Chance Rides, Inc. has become aware, through field experience, that structural damage to the rear stub tower legs of the CENTURY WHEEL amusement ride can result while attempting to raise the rear tower legs. Damage to the stub tower can occur if the axle assembly hangs up in the cradle. Failure to remove the cradle braces, as outlined in the manual, before raising the rear tower legs will cause the axle to hang up in the cradle.

Chance Rides, Inc. has developed a warning decal to remind all operators of the need to remove the cradle braces prior to attempting to raise the rear tower legs. All owner/operators of the above noted CENTURY WHEELS are required to order and install decal number 22203208 as outlined in this bulletin. Two decals per ride are required and are available at no charge if ordered within 90 days of the date on this bulletin.

In addition to installing decal number 22203208, all owner/operators of the above noted CENTURY WHEEL amusement rides must perform the following sequence, as outlined on pages 16 through 22 of the setup manual, when raising the rear tower legs:

1. Make sure all cradle supports including the cradle braces and the tie rods have been removed.
2. Remove all chains, turnbuckles and braces which secure the tower, hub and sweeps to the trailer.
3. Fully open the hydraulic shut-off valves for the rear tower erection cylinders.
4. Slowly raise both tower legs.

NOTE: It is important to be sure that both tower legs come up out of the saddle at the same time. Manipulating one tower leg at a time may be necessary to insure this and to keep the main axle level.

5. Raise tower legs beyond their normal operating position.
6. Lower front tower legs to approximate position, lower and mate rear towers to front.
7. Install capscrews, hardened washers and nuts with 700 ft.lbs torque.

All work must be performed by qualified personnel, capable of understanding the function of the parts and their proper installation.

NOTICE

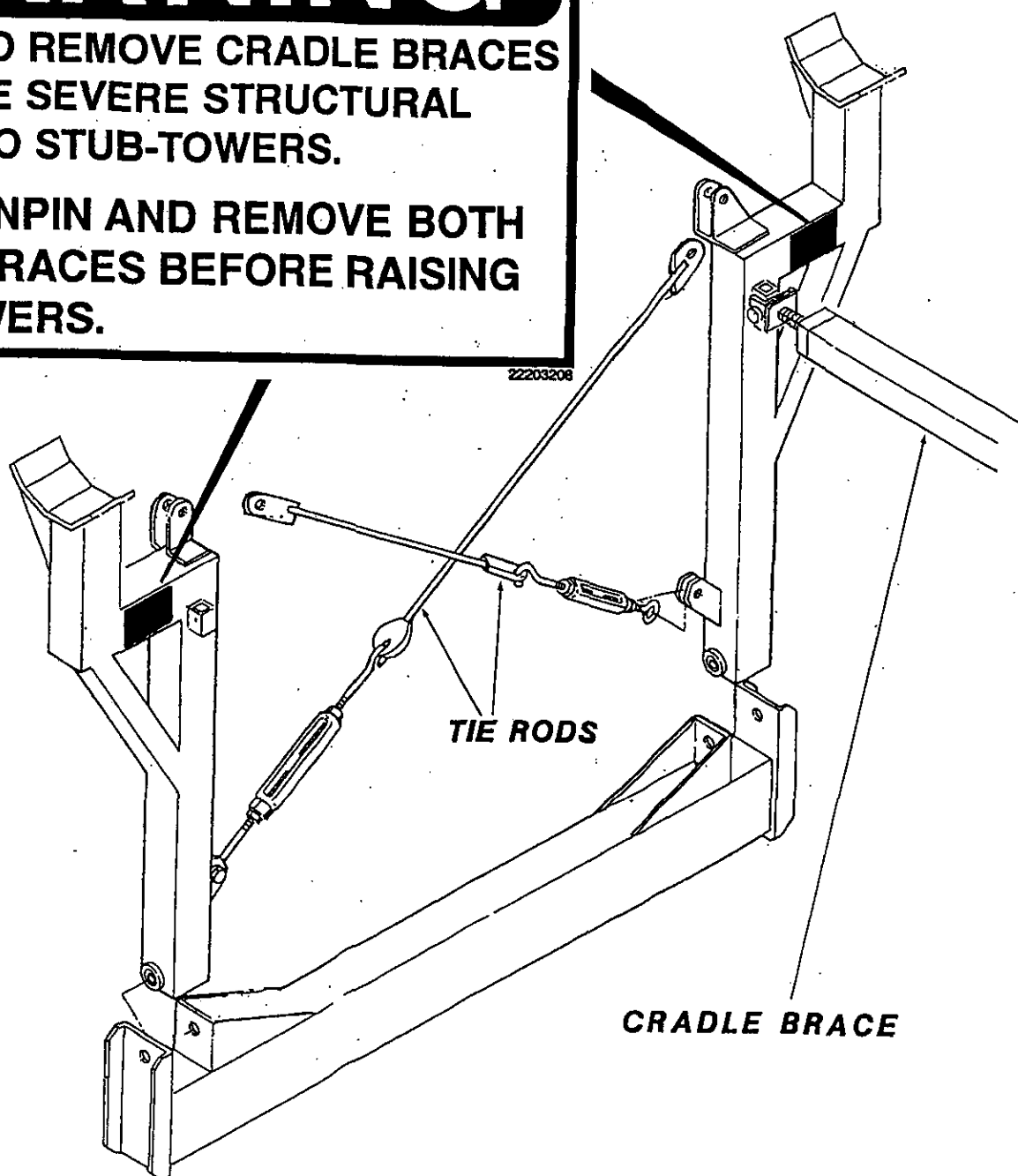
Use only those components authorized, specified or provided by Chance Rides, Inc.

Chance Rides, Inc. SPECIFICALLY DISCLAIMS ANY LIABILITY for losses associated with any unauthorized alterations and/or modifications or additions and installations of unauthorized components.

WARNING

**FAILURE TO REMOVE CRADLE BRACES
MAY CAUSE SEVERE STRUCTURAL
DAMAGE TO STUB-TOWERS.**

**ALWAYS UNPIN AND REMOVE BOTH
CRADLE BRACES BEFORE RAISING
REAR TOWERS.**





NUMBER: P406R1156-0

DATE: AUG. 1, 1994

SUPERSEDES:

PRODUCT IMPROVEMENT NOTICE

Effective Serial Number: 40600193 through 40601894

Ride: CENTURY WHEEL

Subject: Spreader Bar Handling
Platform

Chance Rides, Inc. has designed and is now offering a Spreader Bar Handling Platform Kit. This kit, number K406R1156-0, can be retrofitted to the above noted CENTURY WHEEL amusement rides. Each kit contains all parts and instructions necessary to rework one ride.

When this kit is properly installed and used, two persons can carry the spreader bars directly from their racked position at the front of the trailer to their installation position on the sweeps, without leaving the trailer deck. This will save time during the set-up and tear down procedure. Kit number K406R1156-0 is being offered at a reduced price if ordered within ninety (90) days of the date on this Product Improvement Notice.

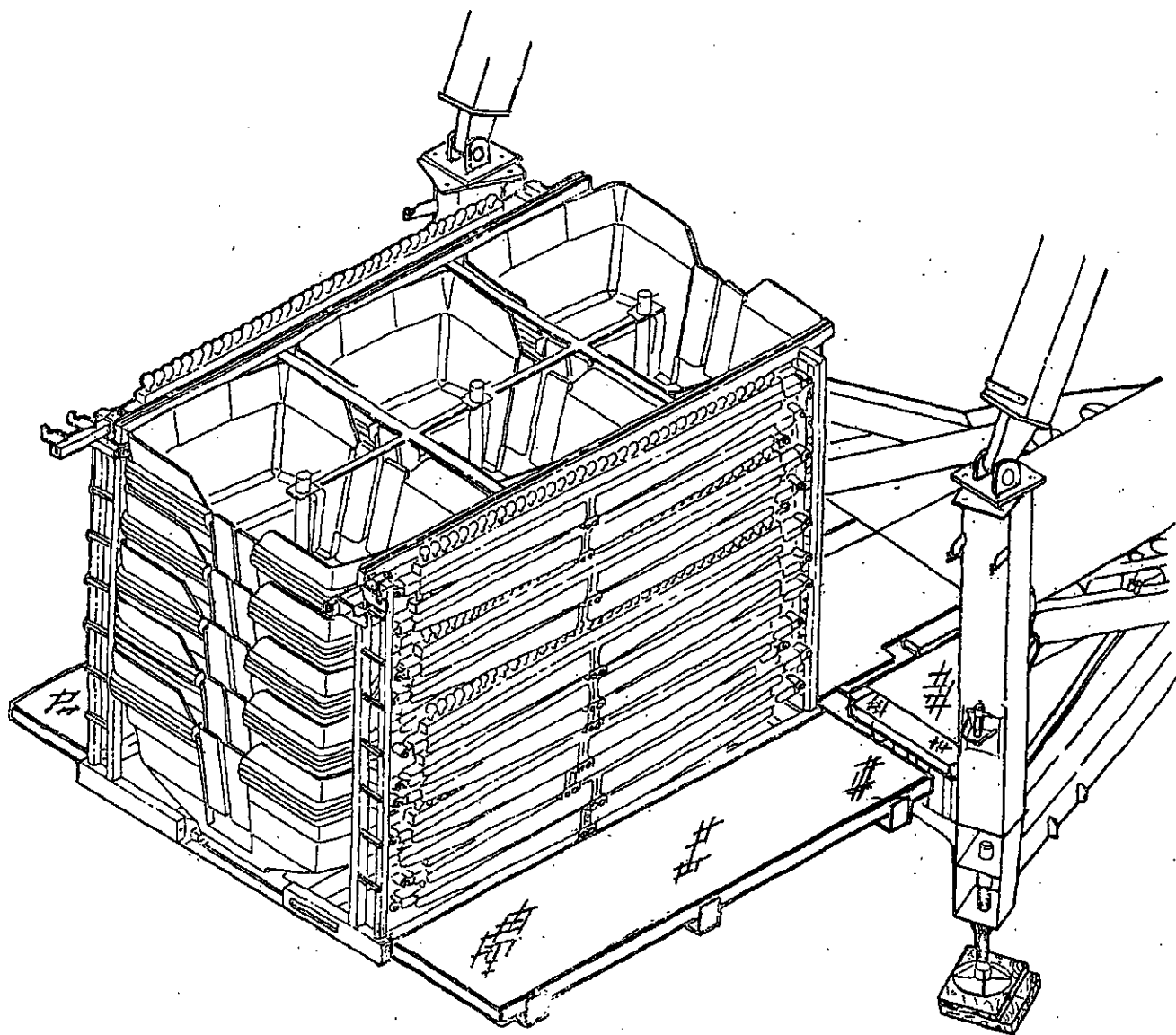
Contact the Chance Rides, Inc. Customer Service Department regarding questions concerning this product improvement notice or to order kit number K406R1156-0.

All work must be performed by qualified personnel, capable of understanding the function of the parts and their proper installation.

NOTICE

Use only those components authorized, specified or provided by Chance Rides, Inc.

Chance Rides, Inc. SPECIFICALLY DISCLAIMS ANY LIABILITY for losses associated with any unauthorized alterations and/or modifications or additions and installations of unauthorized components.



SPREADER BAR HANDLING PLATFORM



NUMBER: B406R1165-0

DATE: SEPT. 1, 1994

SUPERSEDES:

SERVICE BULLETIN

Effective Serial Number: 40600293 through 40602594

Ride: CENTURY WHEEL

Subject: Lifting Adapter Replacement

Chance Rides, Inc. has become aware that a gondola could fall from the lifting adapter during set-up or tear-down of the CENTURY WHEEL amusement ride. Improperly engaging the lifting adapter in the gondola or irregular wearing of the lifting adapter can result in the gondola coming off of the lifting adapter. If this occurs, injury to personnel or damage to the equipment may occur.

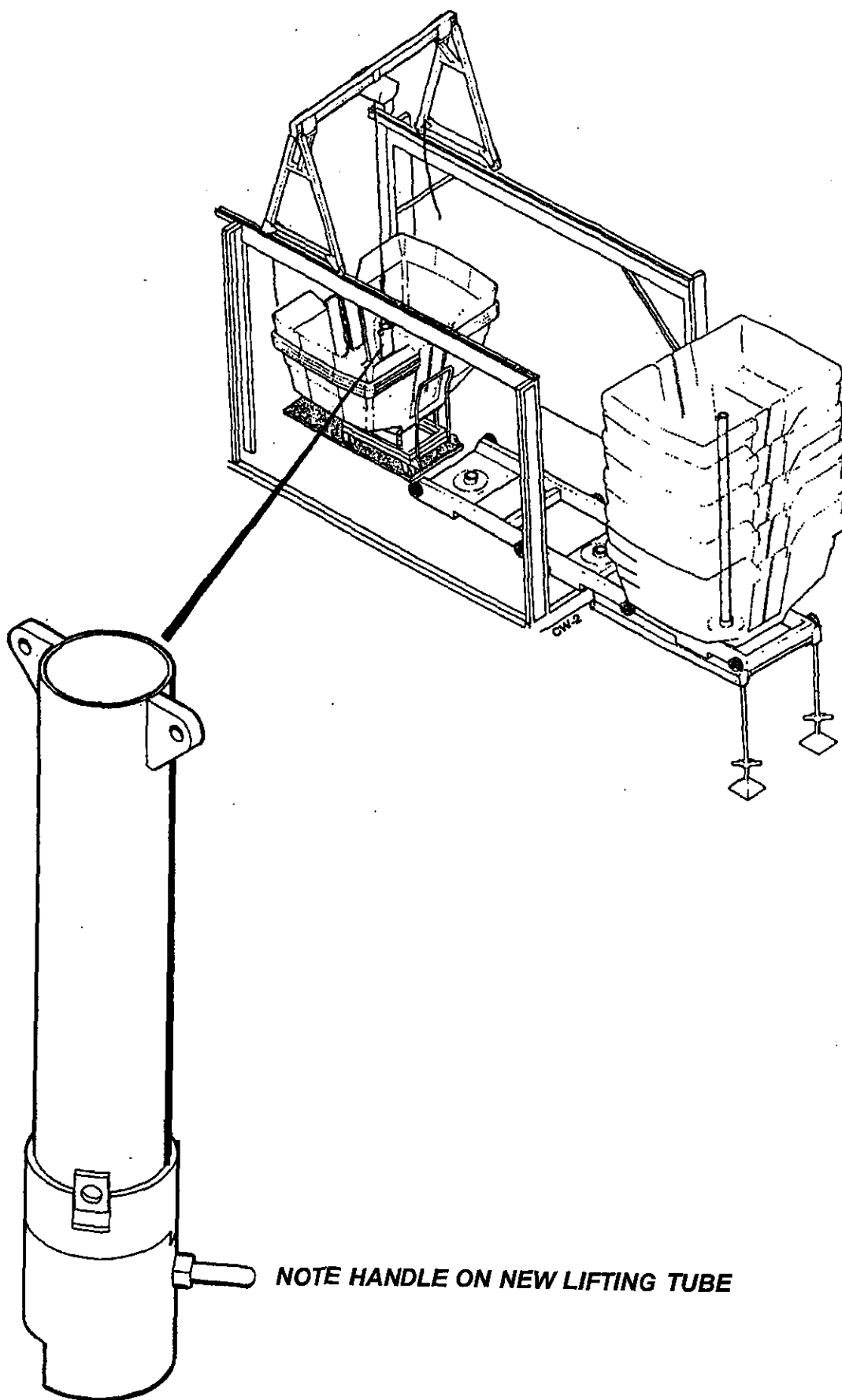
Chance Rides, Inc. has designed a new lifting adapter that engages the gondola from two sides and locks when the lifting adapter is in place. All owners/operators of the above noted CENTURY WHEEL rides are required to order and use the new lifting adapter. Order part number 38237501. This new lifting adapter is available at no charge if ordered within ninety (90) days of the date on this bulletin.

All work must be performed by qualified personnel, capable of understanding the function of the parts and their proper installation.

NOTICE

Use only those components authorized, specified or provided by Chance Rides, Inc.

Chance Rides, Inc. SPECIFICALLY DISCLAIMS ANY LIABILITY for losses associated with any unauthorized alterations and/or modifications or additions and installations of unauthorized components.



NOTE HANDLE ON NEW LIFTING TUBE



NUMBER: B406R1167-0

DATE: SEPT. 12, 1994

SUPERSEDES:

SERVICE BULLETIN

Effective Serial Number: 406-00193 through 406-02594

Ride: CENTURY WHEEL

Subject: Air Conditioner Rework

Chance Rides, Inc. has designed an air conditioner rain cover for the above noted CENTURY WHEEL amusement rides. This rain cover, when properly installed, will reduce the possibility of rain water getting into the air conditioning unit, which is mounted to the side of the main electrical control box. Failure to order and install this rain cover may result in possible electrical damage to the air conditioning unit.

Chance Rides, Inc. requires all owner/operators of the above noted CENTURY WHEEL rides to order and install the air conditioner rain cover, part number 32037537. This rain cover is available at no charge if ordered within 90 days of the date of this bulletin. Use the instructions in this bulletin to install the rain cover. All work must be completed and the Certification Of Compliance returned to Chance Rides, Inc. within fifteen (15) days of the receipt of the rain cover.

All work must be performed by qualified personnel, capable of understanding the function of the parts and their proper installation.

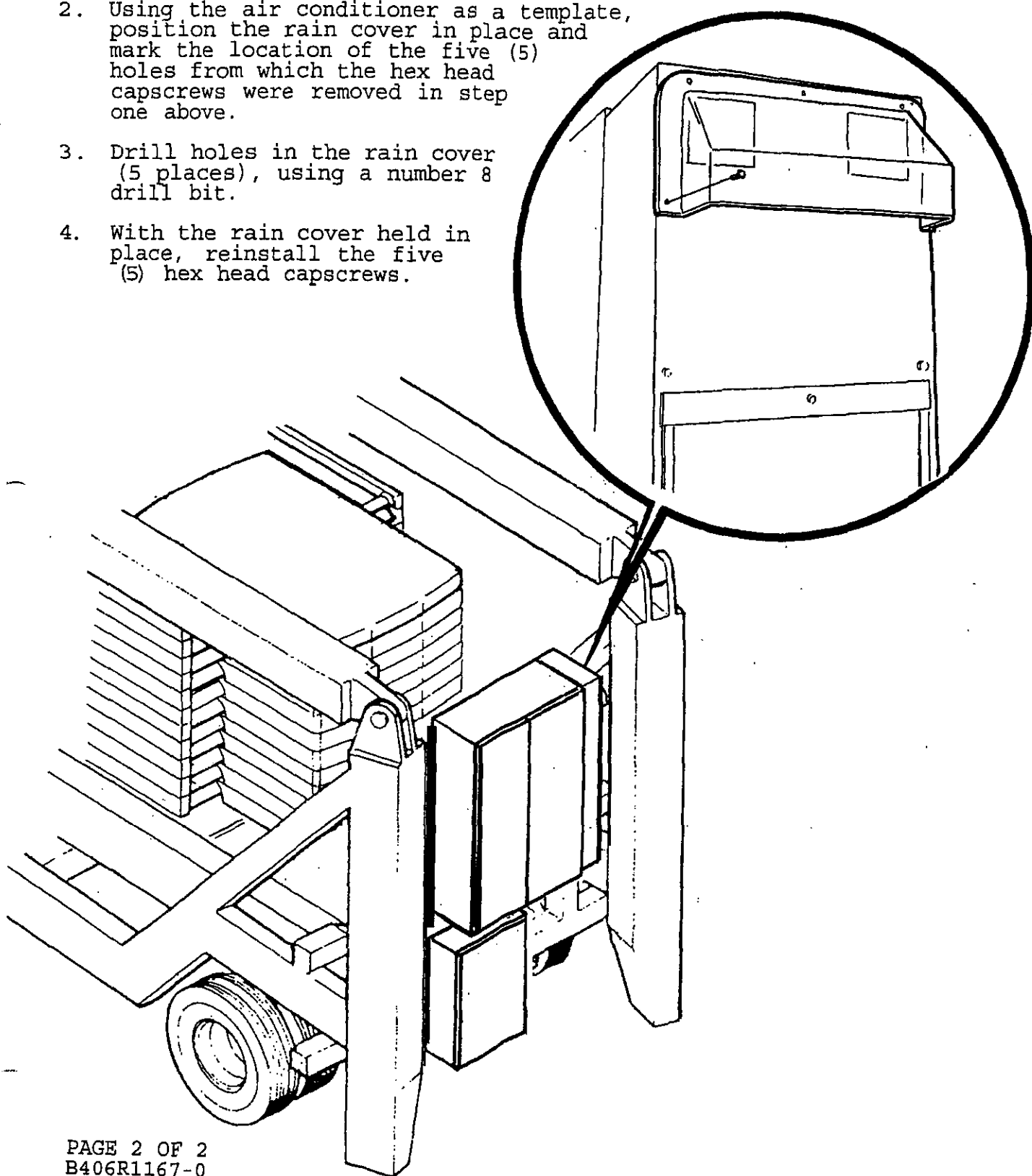
NOTICE

Use only those components authorized, specified or provided by Chance Rides, Inc.

Chance Rides, Inc. SPECIFICALLY DISCLAIMS ANY LIABILITY for losses associated with any unauthorized alterations and/or modifications or additions and installations of unauthorized components.

Installation Instructions for Air Conditioner Rain Cover

1. Remove the five (5) hex head capscrews around the top of the air conditioner unit.
2. Using the air conditioner as a template, position the rain cover in place and mark the location of the five (5) holes from which the hex head capscrews were removed in step one above.
3. Drill holes in the rain cover (5 places), using a number 8 drill bit.
4. With the rain cover held in place, reinstall the five (5) hex head capscrews.





NUMBER: B406R1168-0

DATE: NOV. 11, 1994

SUPERSEDES:

America's Largest Manufacturer of Amusement Rides

SERVICE BULLETIN

Effective Serial Number: All Portable Units

Ride: CENTURY WHEEL

Subject: Tear-down Pins

Chance Rides, Inc. has become aware that some owner/operators of the above noted CENTURY WHEEL amusement rides have not followed the manufacturer's recommendations as to the sequence in which the tear-down pins are installed or removed. Failure to follow the manufacturer's recommendations as to the installation and removal of the tear-down pins will result in serious structural damage and possible injury to personal. The set-up and tear-down procedures are found in the CENTURY WHEEL Set-up manual, which is part of the Service Manual. Refer to the Chance Rides, Inc. Service Manual for complete instructions.

Set-Up Procedure:

Installation of the tear-down pins is as follows:

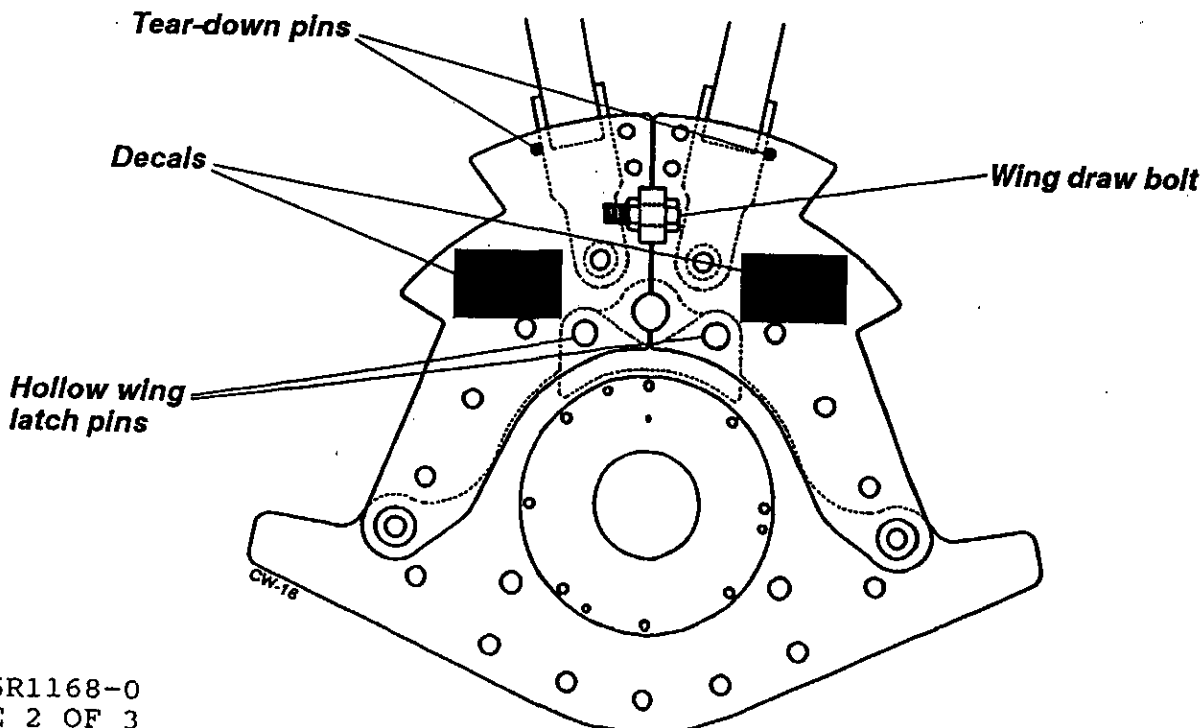
1. Pull sweeps, installing short and long spreader bars each time until the last set of long and short spreader bars are ready to be installed.
2. At the hub of the wheel, install the special wing draw bolts, lock nuts and hairpins, four places.
3. Tighten the wing draw bolts to pull the wings completely together.
4. Install the hollow wing latch pins and hairpins, four places.
5. Install the tear-down pins and hairpins, four places.
6. Turn the wheel so that the opening for the last set of short and long spreader bars is at the bottom, install the short spreader bars and then the long spreader bars.
7. Continue the set-up of the wheel.

Tear-Down Procedure:

-Removal of the tear-down pins is as follows:

1. Remove the two adjustable short spreader bars and the corresponding solid long spreader bars.
2. Make sure the tear-down pins are in place.
3. Rotate the wheel 180 degrees, so the opening where the adjustable spreader bars and the corresponding solid long spreader bars were, is now at the top of the wheel.
4. Remove the hollow wing latch pins and hairpins, four places.
5. Loosen and remove the wing draw bolts, lock nuts and hairpins, four places.
6. Using the winches to spread the sweeps, remove the long spreader bars and the short spreader bars from both sides of the center sweep, which is opposite the space where the adjustable spreader bars had been located. Let these sweeps fold down to the center.
7. Use the winches to spread the sweeps and remove the next two sets of long and short spreader bars. Let these sweeps down approximately half way.
8. Remove the tear-down pins and hairpins, four places.
9. Continue the tear-down of the wheel.

A decal, located on the wings, also describes the proper sequence for removal of the tear-down pins. If this decal is missing or worn it must be replaced. Order decal part number 22197703. Two are required per ride.



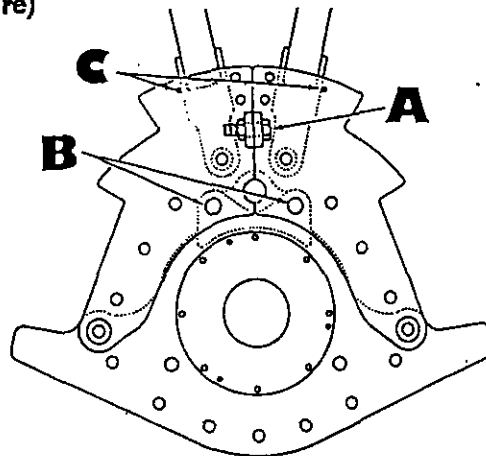


WARNING

THE TEAR-DOWN PINS MUST BE INSTALLED AND REMOVED EXACTLY AS DESCRIBED. ANY VARIATION COULD CAUSE SERIOUS STRUCTURAL DAMAGE AND RESULT IN PERSONAL INJURY.

SET-UP (See manual for complete set-up procedure)
After all sweeps are spread but before adjustable spreader bars are installed:

1. Install special wing draw bolt, lock nut and hairpin, "A", four (4) places.
2. Tighten draw bolts to pull wings fully together.
3. Install the hollow wing latch pins and hairpins, "B."
4. Install tear-down pins, "C."

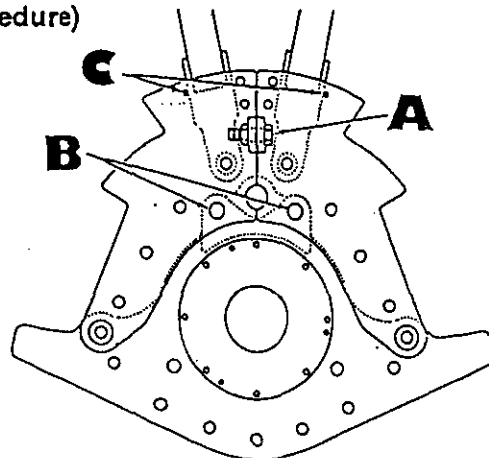


WARNING

THE TEAR-DOWN PINS MUST BE INSTALLED AND REMOVED EXACTLY AS DESCRIBED. ANY VARIATION COULD CAUSE SERIOUS STRUCTURAL DAMAGE AND RESULT IN PERSONAL INJURY.

TEAR-DOWN (See manual for complete tear-down procedure)
After adjustable spreader bars are removed but before any solid spreader bars are removed:

1. Make sure the tear down pins, "C," are in place.
2. Remove the hollow wing latch pins and hairpins, "B."
3. Loosen and remove the special wing bolt, lock nut and hairpin, "A."
4. Use the winches to remove the solid spreader bars connected to the sweep that is opposite the adjustable spreader bar (between sweeps #1 and #2 and between sweeps #1 and #3.) Let these sweeps fold down to the center.
5. Remove the solid spreader bars from between sweeps #2 and #4 and between sweeps #3 and #4.
6. Let the sweeps down approximately half way, then remove the tear-down pins, "C."





NUMBER: B406R1174-0

DATE: March 22, 1996

SUPERSEDES:

America's Largest Manufacturer of Amusement Rides

SERVICE BULLETIN

Effective Serial Number: All Units except 406-03395

Ride: CENTURY WHEEL

Subject: Gondola Door Rework

Chance Rides, Inc. has designed a new door collar which acts as a retention device for the gondola doors on the above noted CENTURY WHEEL amusement rides. These door collars, when properly installed, will reduce the possibility of someone inadvertently opening the gondola doors while the ride is in operation.

In addition to these new door collars, Chance Rides, Inc. has also designed a new caution decal to be positioned on the inside of the gondola doors. This decal warns persons not to attempt to open the doors unless the gondola is stopped in the load/unload station.

Chance Rides, Inc. requires all owner/operators of the above noted CENTURY WHEEL rides to order and install both the new door collars and decals. A total of 30 right-hand door collars, part number 406-132-8, and 30 left-hand door collars, part number 406-132-9, are required per ride. Fifteen caution decals, part number 406-177-001, are also required. In addition, 60 "PUSH DOWN AND IN" decals, part number 406-179-1 and 60 "PUSH DOWN AND PULL" decals, part number 406-178-1 must be installed on each ride noted above. The door collars and the decals are available at no charge if ordered within 90 days of the date on this bulletin. Use the instructions in this bulletin to install both the door collars and the decals.

All work must be performed by qualified personnel, capable of understanding the function of the parts and their proper installation.

NOTICE

Use only those components authorized, specified or provided by Chance Rides, Inc.

Chance Rides, Inc. SPECIFICALLY DISCLAIMS ANY LIABILITY for losses associated with any unauthorized alterations and/or modifications or additions and installations of unauthorized components.

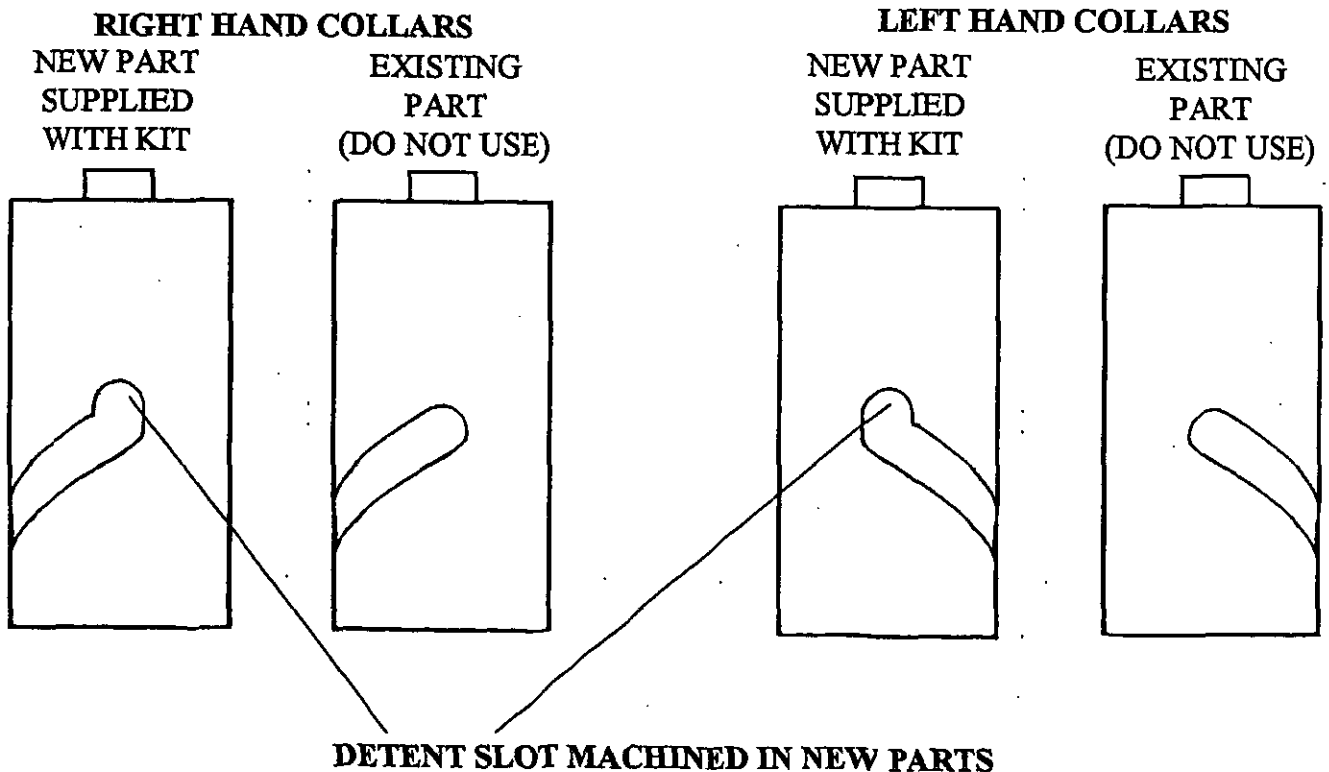
Installation Instructions for Door Collars and Decals

1. Remove the top 1/4-20 x 1/2 inch long hex head capscrew which secures the gondola door to the top door hinge angle and remove the door.
2. Drive the expansion pin out of the existing door collar and remove the collar.
3. Position the new collar in place and install the new expansion pin, part number 65183402. Sixty expansion pins are required.

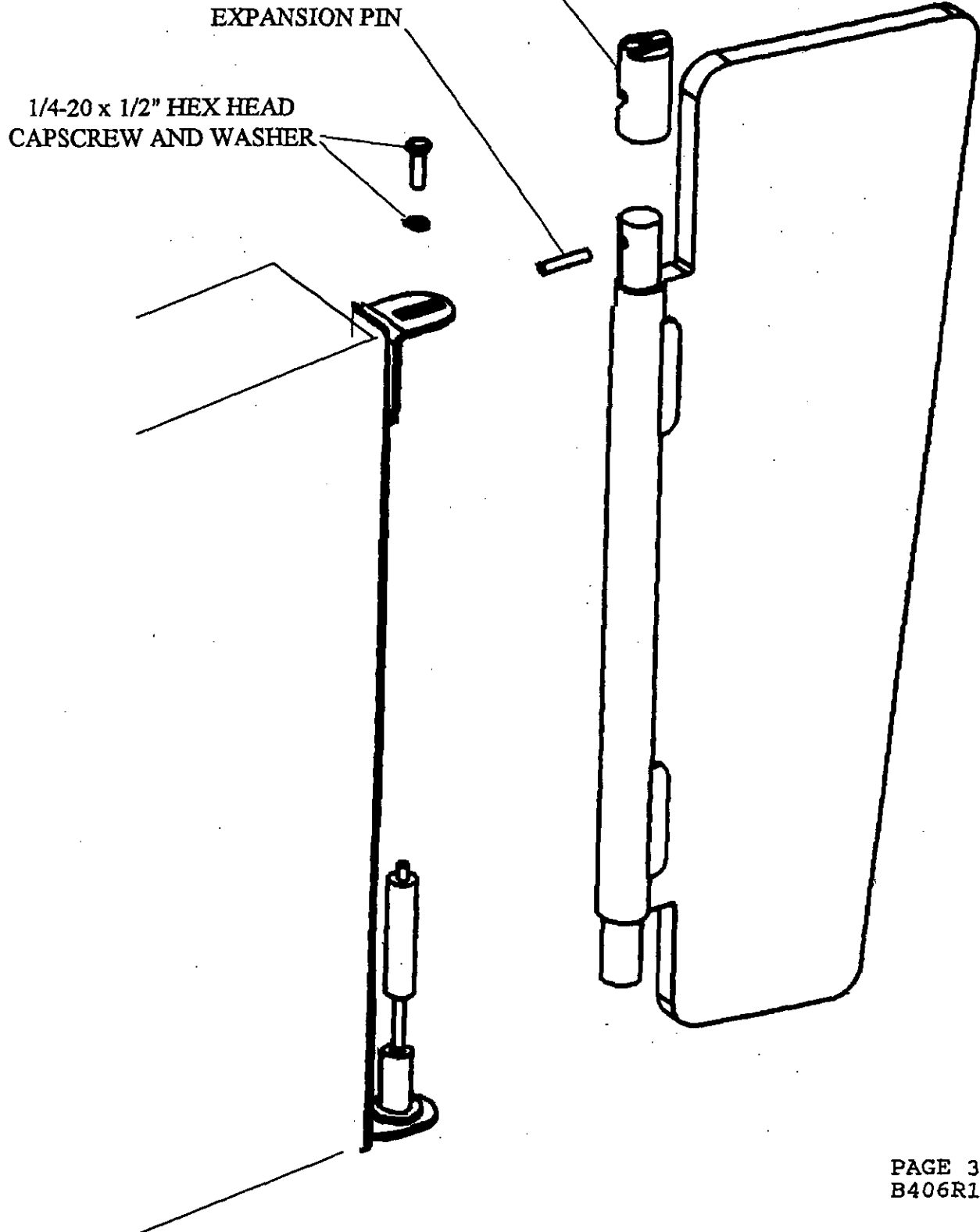
NOTE: Be sure to install the right-hand collar on the right-hand door and the left-hand collar on the left-hand door, so doors open inward only.

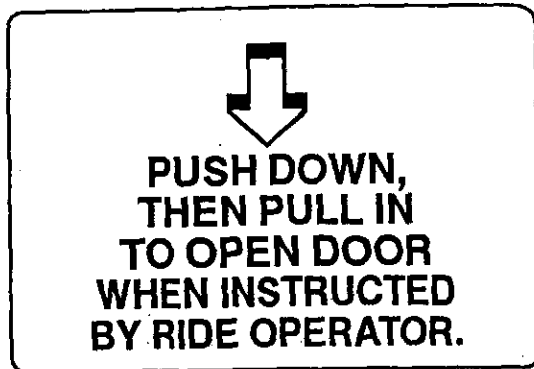
4. Reinstall the door to the door hinge angle and tighten the 1/4-20 hex head capscrew until the lock washer is flat.
5. Install new decals, over existing ones.

IMPORTANT: NOTE THE DIFFERENCE BETWEEN THE EXISTING PARTS AND THE NEW PARTS SUPPLIED WITH THE KIT, AS SHOWN BELOW.



Replace existing COLLAR with the COLLAR provided.
**IMPORTANT: NOTE THE DIFFERENCE BETWEEN
RIGHT-HAND AND LEFT HAND COLLARS.
DOORS MUST OPEN INWARD ONLY.**





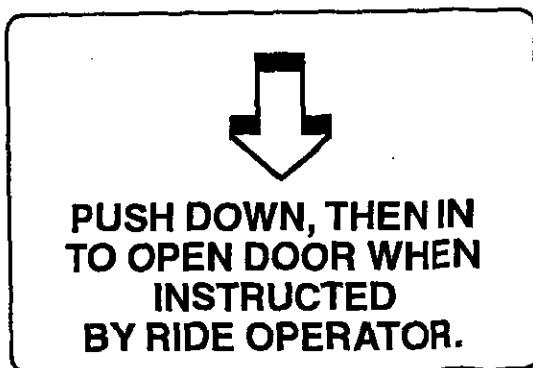
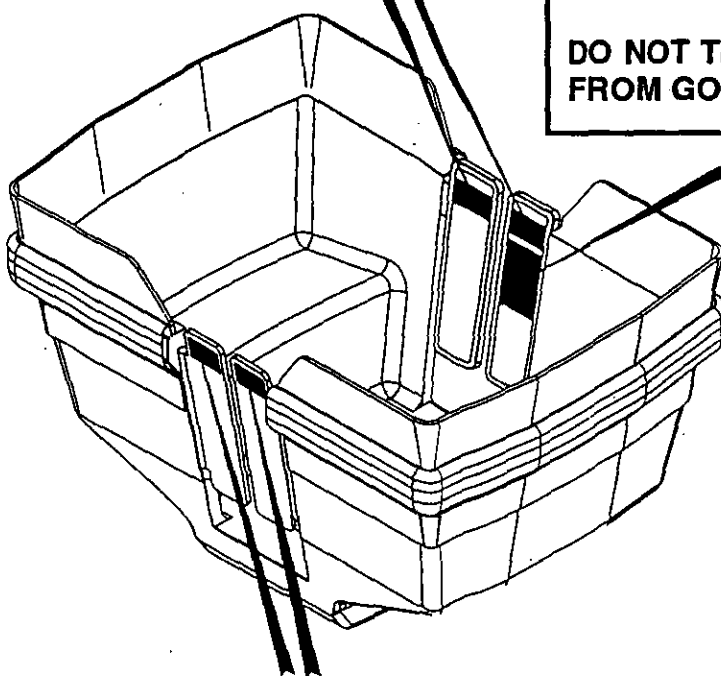
! CAUTION

**EXITING RIDE WHEN
GONDOLA IS NOT
IN THE LOAD/UNLOAD
STATION CAN RESULT
IN SERIOUS INJURY.**

**REMAIN SEATED WITH
ARMS AND HANDS INSIDE
GONDOLA.**

**DO NOT ATTEMPT TO
OPEN GONDOLA DOORS
UNTIL INSTRUCTED
BY RIDE OPERATOR.**

**DO NOT THROW OBJECTS
FROM GONDOLA.**





NUMBER: B406R1177-0

DATE: May 23, 1997

SUPERSEDES:

SERVICE BULLETIN

Effective Serial Number: Units 1 through 42 (Portable Units Only)

Ride: CENTURY WHEEL

Subject: Wind Brace Supports

Chance Rides, Inc. has become aware, through field experience, that damage to the wind brace supports on the CENTURY WHEEL amusement ride can occur during set-up and tear-down of the ride. Damage to the wind brace supports can occur if a wind brace is dropped on a support, if someone walks on a wind brace while it is positioned on a support, or if a wind brace bounces up and down on a support due to an abrupt stop while the stub-towers are pulled out or pushed in.

Chance Rides, Inc. has designed a new wind brace support. The new supports are made of a heat treated material with the 4 inch diameter stop plate heat shrunk to the shaft.

NOTE: Welding on a wind brace support will change the hardness of the shaft and allow damage to occur. DO NOT WELD on the wind brace supports.

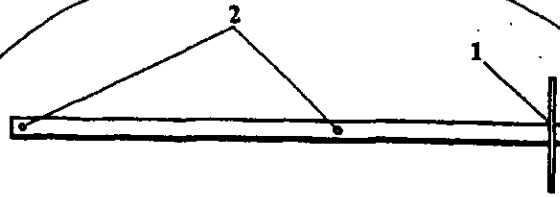
All owner/operators of the above noted CENTURY WHEELS are required to order and install the new style wind brace supports, part number 30840900. Four wind brace supports are required per ride and are available at no charge if ordered within 90 days of the date on this bulletin.

All work must be performed by qualified personnel, capable of understanding the function of the parts and their proper installation.

NOTICE

Use only those components authorized, specified or provided by Chance Rides, Inc.

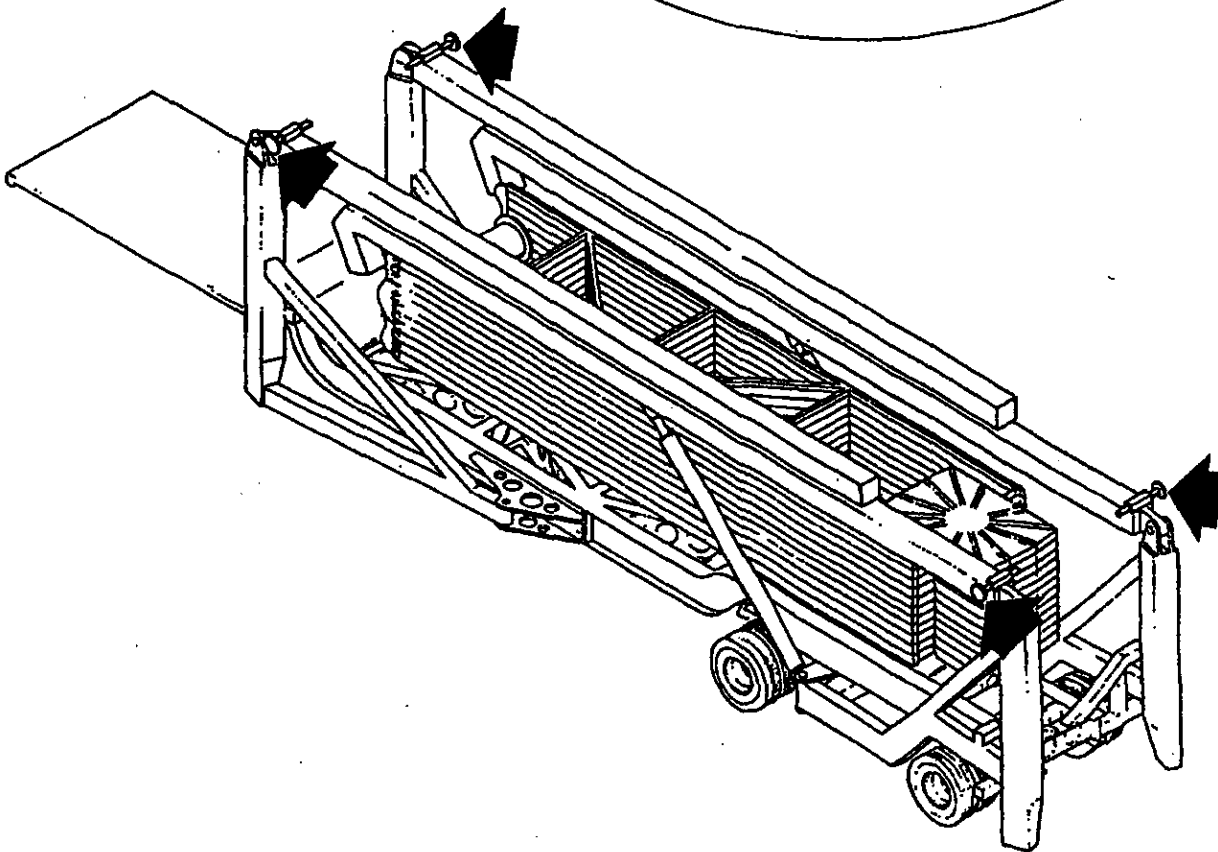
Chance Rides, Inc. SPECIFICALLY DISCLAIMS ANY LIABILITY for losses associated with any unauthorized alteration and/or modifications or additions and installations of unauthorized components.



**New style
WIND BRACE SUPPORT
(4 places)**

Note these differences between new style
and old style parts:

1. Stop plate is shrink-fit
to shaft, not welded
2. Only two drilled holes



CAUTION: Wind braces are heavy and can cause personal injury if they do not stay in place during set-up and tear-down of the ride. Always make sure that the wind brace supports are in their fully extended position when being used. Observe the wind braces during each set-up and tear-down to insure they do not contact the tower leg bolt-up plates.

**CHANCE RIDES, INC.**

4219 Irving

Wichita, KS 67277-2328

U.S.A.

Phone: 1-800-242-6231 • FAX: 1-316-942-7416

Website: www.rides.com

Bulletin No: B406R1197-A

Release Date: September 21, 1999

Effective Date: September 21, 1999

Supersedes: B406R1197-A

Completion Date: December 21, 1999

Page: 1 of 3

SERVICE BULLETIN

Ride Manufacturer: CHANCE RIDES, INC.

Affected Production Dates: All

Ride Name: CENTURY WHEEL

Affected Serial Nos.: All Units

Model No.: 406

Abstract of Issue:**INSPECTION OF LONG SPREADER BARS****Reason For Release:**

Chance Rides, Inc. has become aware that cracks can develop in the long spreader bars which support the drive rims on CENTURY WHEEL amusement rides. A kit has been developed to reinforce the long spreader bars in those areas.

Action to be Taken:

Chance Rides, Inc. requires all owner/operators to visually inspect and rework all long spreader bars as outlined in this bulletin.

If indications are found in any spreader bar, contact the Chance Customer Service Department.

If no indications are found, order and install the Spreader Bar Rework Kit, number K406R1197-0. This kit includes all necessary parts to rework one complete ride, with complete instructions for installation. **DO NOT INSTALL THIS KIT IF ANY SPREADER BAR IS CRACKED OR OTHERWISE DAMAGED.**

The kit will be offered at a reduced price if ordered within 90 days of the release date of this bulletin.



CHANCE RIDES, INC.

4219 Irving

Wichita, KS 67277-2328

U.S.A.

Phone: 1-800-242-6231 • FAX: 1-316-942-7416

Website: www.rides.com

E-mail: rides@rides.com

Bulletin No: B406R1197-A

Release Date: September 21, 1999

Effective Date: September 21, 1999

Supersedes: B406R1197-A

Completion Date: December 21, 1999

Page: 2 of 3

Ride Manufacturer: CHANCE RIDES, INC.

Affected Production Dates: All

Ride Name: CENTURY WHEEL

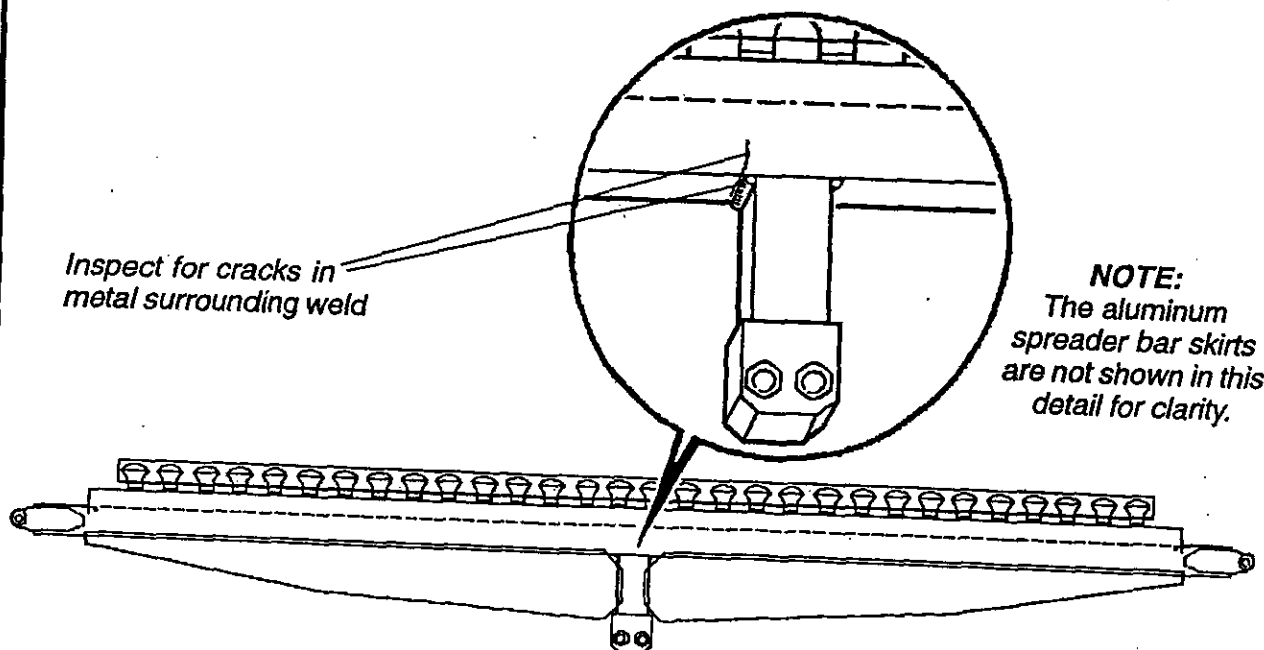
Affected Serial Nos.: All Units

Model No.: 406

Detail of Issue (continued):

INSPECTION PROCEDURE

Inspect the weld and the surrounding metal in the area shown in the following illustration. Inspect both sides of the long spreader bar. This inspection must be performed on ALL long spreader bars.



If any indications are found, contact the Chance Customer Service Department.

**CHANCE RIDES, INC.**

4219 Irving
Wichita, KS 67277-2328
U.S.A.

Phone: 1-800-242-6231 • FAX: 1-316-942-7416

Website: www.rides.com

E-mail: rides@rides.com

Bulletin No: B406R1197-A

Release Date: September 21, 1999

Effective Date: September 21, 1999

Supersedes: B406R1197-A

Completion Date: December 21, 1999

Page: 3 of 3

Ride Manufacturer: CHANCE RIDES, INC.

Affected Production Dates: All

Ride Name: CENTURY WHEEL

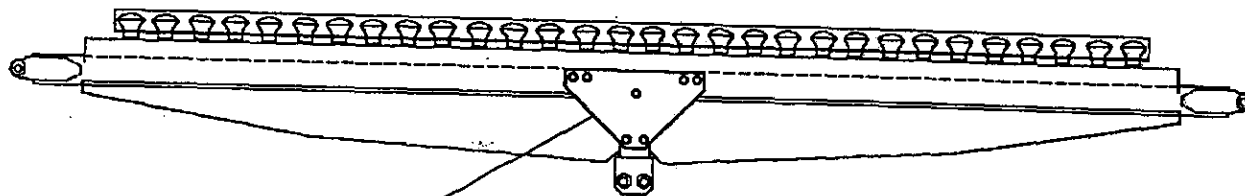
Affected Serial Nos.: All Units

Model No.: 406

Detail of Issue (continued):

After all spreader bars have been inspected, install the Spreader Bar Rework Kit, number K406R1197-0 using the instructions provided with the kit. The kit includes the following parts:

<u>Part Number</u>	<u>Description</u>	<u>Quantity</u>
406-257-001	GUSSET - SPREADER BAR	60
60743700	HEX HEAD CAPSCREW (5/16-24 x 2-5/8)	210
64750600	NUT - HEX (5/16-24 FULL)	210
K406R1197-0	INSTALLATION INSTRUCTIONS (drawing)	1



Gusset
(2 places each spreader bar)

All work must be performed by qualified personnel, capable of understanding the function of the parts and their proper installation.

NOTICE

Use only those components authorized, specified or provided by Chance Rides, Inc.

Chance Rides, Inc. SPECIFICALLY DISCLAIMS ANY LIABILITY for losses associated with any unauthorized alterations and/or modifications or additions and installations of unauthorized components.



CHANCE RIDES MANUFACTURING, INC.
4200 Walker
Wichita, KS 67277-2328
U.S.A.
Phone: 1-316-942-7411 • FAX: 1-316-942-2012
Website: www.rides.com
E-mail: rides@rides.com

Bulletin No:	B406CRM135-0
Release Date:	March 31, 2005
Effective Date:	March 31, 2005
Supersedes:	N / A
Completion Date:	See Text
Page:	1 of 2

SERVICE BULLETIN

Ride Manufacturer: CHANCE RIDES, INC.

Affected Production Dates: All

Ride Name: CENTURY WHEEL

Affected Serial Nos.: All

Model No.: 406

Abstract of Issue:

Gondola Hub Inspection

Reason For Release:

Chance Rides Manufacturing, Inc. has become aware that cracks can develop around the gondola hubs on the above noted amusement rides. The hub is attached to the gondola frame, and is secured to the stem by two pins.

Action to be Taken:

Chance Rides Manufacturing, Inc. requires all owner/operators of the above noted CENTURY WHEEL amusement rides to inspect all gondola hubs as described in this bulletin.

The inspection must be completed immediately upon receipt of this bulletin and annually thereafter.

All work must be performed by qualified personnel, capable of understanding the function of the parts and their proper installation. Use only those components authorized, specified or provided by Chance Rides Manufacturing, Inc. All applicable OSHA safety standards and safe industry practices must be observed.

Observe all safety information contained in the manufacturer's manuals. Make available this bulletin and all related technical information to personnel using the equipment.

Chance Rides Manufacturing, Inc. issues notifications for the benefit of owners of amusement rides manufactured by Chance Rides Manufacturing, Inc. As a service to the industry, and in the interest of employee and public safety, Chance Rides Manufacturing, Inc. also issues notifications for the benefit of owners of amusement ride equipment for which the manufacturer no longer exists, such as the Allan Herschell Company, Chance Manufacturing Co., Inc., Chance Rides, Inc., etc. In doing so, Chance Rides Manufacturing, Inc. does not assume liability for losses associated with amusement ride equipment built by manufacturers other than Chance Rides Manufacturing, Inc.



CHANCE RIDES MANUFACTURING, INC.
4200 Walker
Wichita, KS 67277-2328
U.S.A.
Phone: 1-316-942-7411 • FAX: 1-316-942-2012
Website: www.rides.com
E-mail: rides@rides.com

Bulletin No:	B406CRM135-0
Release Date:	March 31, 2005
Effective Date:	March 31, 2005
Supersedes:	N / A
Completion Date:	See Text
Page:	2 of 2

Ride Manufacturer: CHANCE RIDES, INC. Affected Production Dates: All

Ride Name: CENTURY WHEEL Affected Serial Nos.: All

Model No.: 406

Detail of Issue:

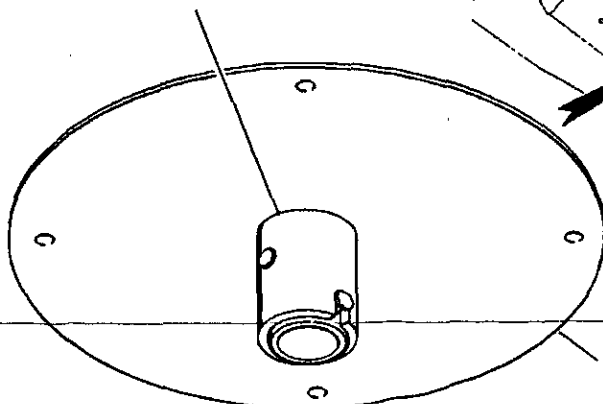
Gondola Hub Inspection Procedure

Remove the access covers and visually inspect the hub on every gondola for cracks as shown in the illustration, paying particular attention to the welded joint, looking for indications in the welds and the parent metal.

IF NO INDICATIONS ARE FOUND, operation of the ride can continue. The gondola hubs must be inspected annually as described in this bulletin.

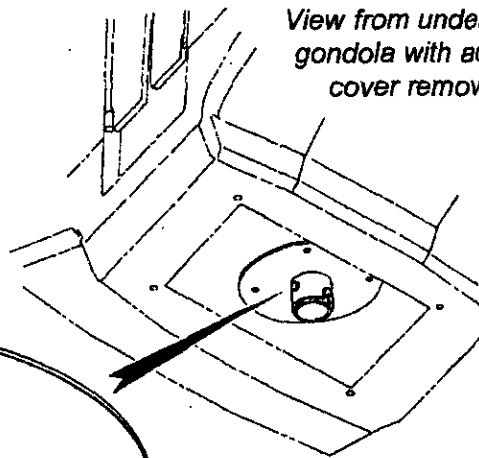
IF ANY INDICATIONS ARE FOUND, do not operate the ride. Contact the Customer Service Department at Chance Rides Manufacturing, Inc. immediately for instructions on the necessary repair procedure. **DO NOT ATTEMPT TO WELD OR OTHERWISE REPAIR THE GONDOLA HUBS EXCEPT AS SPECIFICALLY INSTRUCTED BY CHANCE RIDES MANUFACTURING, INC.**

Inspect welded area around steel tube for indications in the weld or the parent metal



Gondola hub

View from underneath gondola with access cover removed





CHANCE RIDES MANUFACTURING, INC.
4200 Walker
Wichita, KS 67277-2328
U.S.A.
Phone: 1-316-942-7411 • FAX: 1-316-942-2012
Website: www.rides.com
E-mail: rides@rides.com

Bulletin No:	B406CRM163-0
Release Date:	May 15, 2009
Effective Date:	May 15, 2009
Supersedes:	N / A
Completion Date:	June 15, 2009
Page:	1 of 2

SERVICE BULLETIN

Ride Manufacturer: CHANCE RIDES, INC.

Affected Production Dates: All

Ride Name: CENTURY WHEEL (Portable Model Only)

Affected Serial Nos.: All

Model No.: 406

Abstract of Issue:
Trailer Inspection

Reason For Release:

Chance Rides Manufacturing, Inc. has become aware that cracks can develop in the trailer frame on the above noted amusement rides. The area affected is located in the main beams behind the hitch.

Action to be Taken:

Chance Rides Manufacturing, Inc. requires all owner/operators of the above noted portable model CENTURY WHEEL amusement rides to inspect the trailer frame as described in this bulletin.

The inspection must be completed within 30 days of the receipt of this bulletin and annually thereafter.

Trailer Inspection Procedure

The area to be inspected is accessible from under the trailer. The use of an inspection mirror will help view all sides of the inspection area more clearly. Inspect the main trailer beams as shown in the illustration on the following page. Inspect the web around the cutout as shown, and in the flat areas of the beams above and below the cutout, on both sides of both beams. Look for indications in the welds and in the parent metal.

IF NO INDICATIONS ARE FOUND, operation of the ride can continue. The trailer must be inspected annually as described in this bulletin.

IF ANY INDICATIONS ARE FOUND, do not operate the ride. Contact the Customer Service Department at Chance Rides Manufacturing, Inc. immediately for instructions on the necessary repair procedure. **DO NOT ATTEMPT TO WELD OR OTHERWISE REPAIR THE TRAILER EXCEPT AS SPECIFICALLY INSTRUCTED BY CHANCE RIDES MANUFACTURING, INC.**

All work must be performed by qualified personnel, capable of understanding the function of the parts and their proper installation. Use only those components authorized, specified or provided by Chance Rides Manufacturing, Inc. All applicable OSHA safety standards and safe industry practices must be observed.

Observe all safety information contained in the manufacturer's manuals. Make available this bulletin and all related technical information to personnel using the equipment.



CHANCE RIDES MANUFACTURING, INC.
4200 Walker
Wichita, KS 67277-2328
U.S.A.
Phone: 1-316-942-7411 • FAX: 1-316-942-2012
Website: www.rides.com
E-mail: rides@rides.com

Bulletin No:	B406CRM163-0
Release Date:	May 15, 2009
Effective Date:	May 15, 2009
Supersedes:	N / A
Completion Date:	June 15, 2009
Page:	2 of 2

Ride Manufacturer: CHANCE RIDES, INC.

Affected Production Dates: All

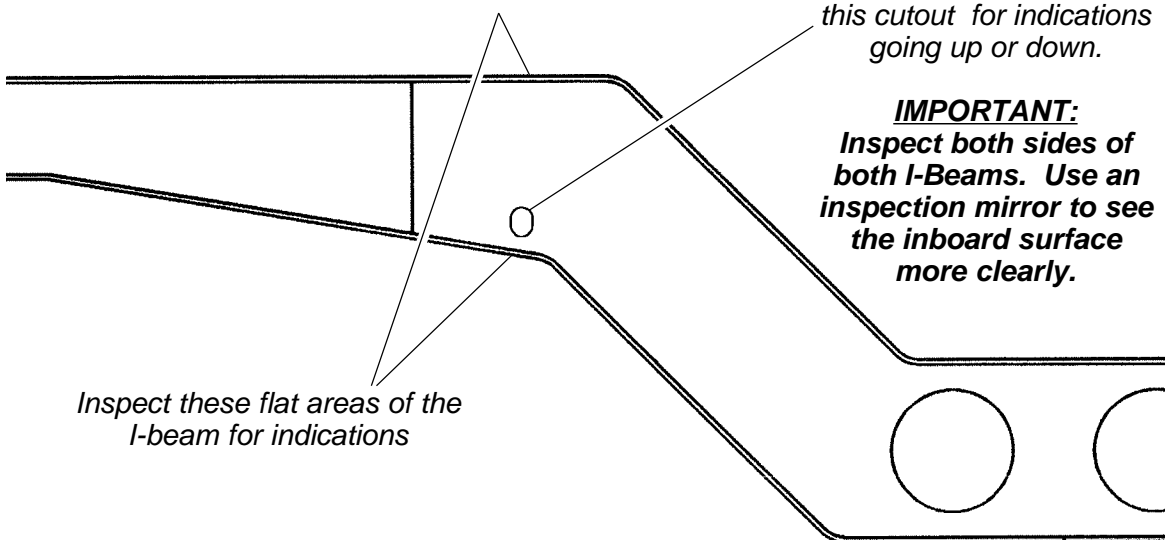
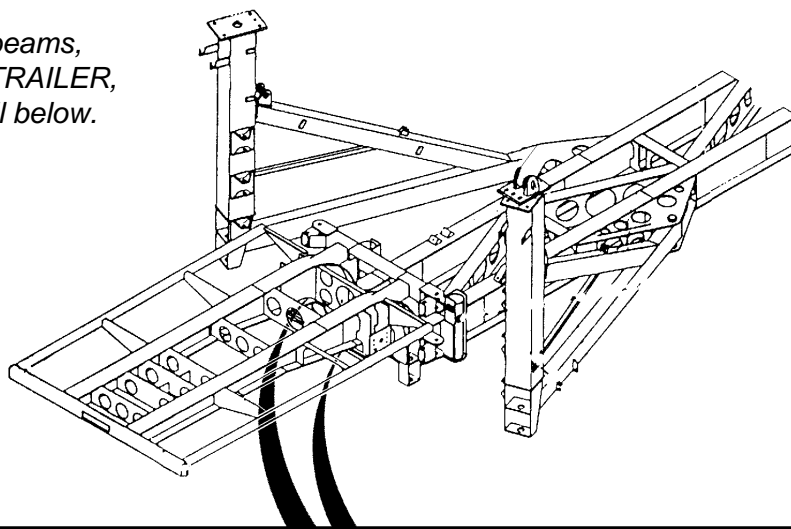
Ride Name: CENTURY WHEEL

Affected Serial Nos.: All

Model No.: 406

Detail of Issue

*Inspect the both main trailer beams,
ONE ON EACH SIDE OF THE TRAILER,
in the areas shown in the detail below.*



DETAIL - Typical I-Beams on both sides of trailer