



NUMBER: B406R1168-0

DATE: NOV. 11, 1994

SUPERSEDES:

SERVICE BULLETIN

Effective Serial Number: All Portable Units

Ride: CENTURY WHEEL

Subject: Tear-down Pins

Chance Rides, Inc. has become aware that some owner/operators of the above noted CENTURY WHEEL amusement rides have not followed the manufacturer's recommendations as to the sequence in which the tear-down pins are installed or removed. Failure to follow the manufacturer's recommendations as to the installation and removal of the tear-down pins will result in serious structural damage and possible injury to personal. The set-up and tear-down procedures are found in the CENTURY WHEEL Set-up manual, which is part of the Service Manual. Refer to the Chance Rides, Inc. Service Manual for complete instructions.

Set-Up Procedure:

Installation of the tear-down pins is as follows:

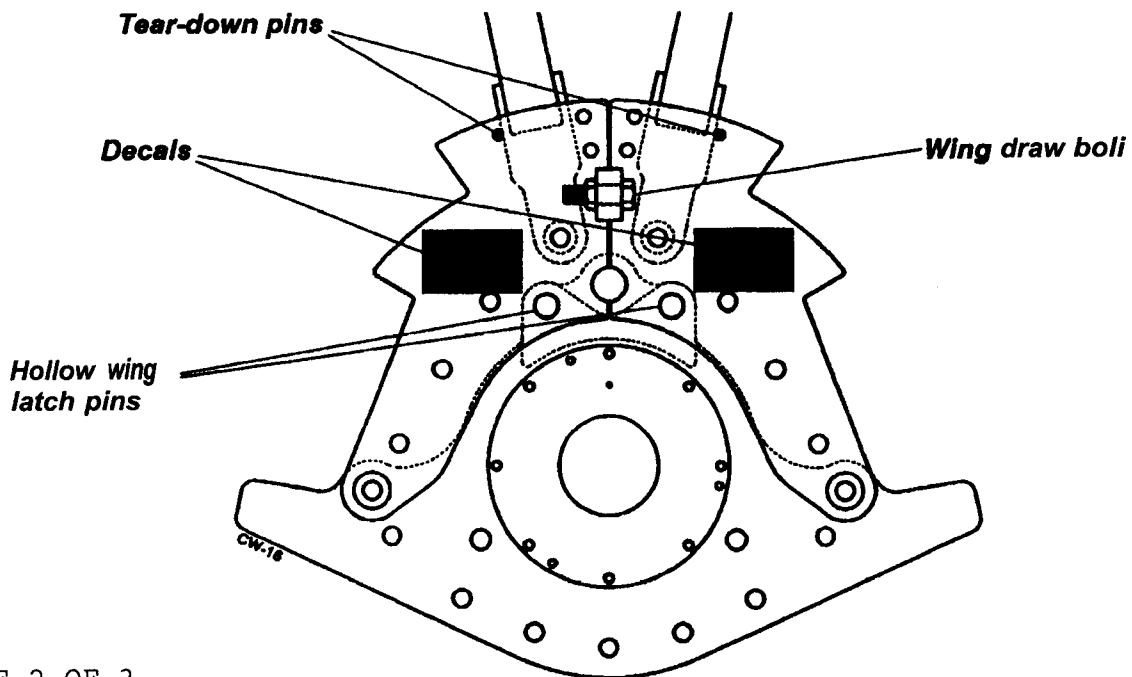
1. Pull sweeps, installing short and long spreader bars each time until the last set of long and short spreader bars are ready to be installed.
2. At the hub of the wheel, install the special wing draw bolts, lock nuts and hairpins, four places.
3. Tighten the wing draw bolts to pull the wings completely together.
4. Install the hollow wing latch pins and hairpins, four places.
5. Install the tear-down pins and hairpins, four places.
6. Turn the wheel so that the opening for the last set of short and long spreader bars is at the bottom, install the short spreader bars and then the long spreader bars.
7. Continue the set-up of the wheel.

Tear-Down Procedure:

Removal of the tear-down pins is as follows:

1. Remove the two adjustable short spreader bars and the corresponding solid long spreader bars.
2. Make sure the tear-down pins are in place.
3. Rotate the wheel 180 degrees, so the opening where the adjustable spreader bars and the corresponding solid long spreader bars were, is now at the top of the wheel.
4. Remove the hollow wing latch pins and hairpins, four places.
5. Loosen and remove the wing draw bolts, lock nuts and hairpins, four places.
6. Using the winches to spread the sweeps, remove the long spreader bars and the short spreader bars from both sides of the center sweep, which is opposite the space where the adjustable spreader bars had been located. Let these sweeps fold down to the center.
7. Use the winches to spread the sweeps and remove the next two sets of long and short spreader bars. Let these sweeps down approximately half way.
8. Remove the tear-down pins and hairpins, four places.
9. Continue the tear-down of the wheel.

A decal, located on the wings, also describes the proper sequence for removal of the tear-down pins. If this decal is missing or worn it must be replaced. Order decal part number 22197703. Two are required per ride.



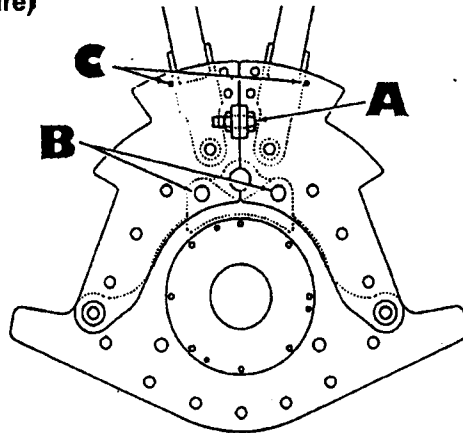


WARNING

THE TEAR-DOWN PINS MUST BE INSTALLED AND REMOVED EXACTLY AS DESCRIBED. ANY VARIATION COULD CAUSE SERIOUS STRUCTURAL DAMAGE AND RESULT IN PERSONAL INJURY.

SET-UP (See manual for complete set-up procedure)
After all sweeps are spread but before adjustable spreader bars are installed:

1. Install special wing draw bolt, lock nut and hairpin, "A", four (4) places.
2. Tighten draw bolts to pull wings fully together.
3. Install the hollow wing latch pins and hairpins, "B."
4. Install tear-down pins, "C."



WARNING

THE TEAR-DOWN PINS MUST BE INSTALLED AND REMOVED EXACTLY AS DESCRIBED. ANY VARIATION COULD CAUSE SERIOUS STRUCTURAL DAMAGE AND RESULT IN PERSONAL INJURY.

TEAR&DOWN (See manual for complete tear-down procedure)
After adjustable spreader bars are removed but before any solid spreader bars are removed:

1. Make sure the tear down pins, "C," are in place.
2. Remove the hollow wing latch pins and hairpins, "B."
3. Loosen and remove the special wing bolt, lock nut and hairpin, "A."
4. Use the winches to remove the solid spreader bars connected to the sweep that is opposite the adjustable spreader bar (between sweeps #1 and #2 and between sweeps #1 and #3.) Let these sweeps fold down to the center.
5. Remove the solid spreader bars from between sweeps #2 and #4 and between sweeps #3 and #4.
6. Let the sweeps down approximately half way, then remove the tear-down pins, "C."

